

Product datasheet for **TA396997S**

HXK2 Rabbit Polyclonal Antibody

Product data:

Product Type:	Primary Antibodies
Applications:	ELISA, WB
Recommended Dilution:	WB: 1:500 - 1:1,000 ELISA: 1:1,000 - 1:2,500
Host:	Rabbit
Clonality:	Polyclonal
Immunogen:	Hexokinase [Yeast]
Specificity:	Anti-HEXOKINASE (RABBIT) Antibody is an IgG fraction antibody purified from monospecific antiserum by a multi-step process which includes delipidation, salt fractionation and ion exchange chromatography followed by extensive dialysis against the buffer stated above. Assay by immunoelectrophoresis resulted in a single precipitin arc against anti-peroxidase, anti-Rabbit Serum as well as purified and partially purified Hexokinase [Yeast]. Cross reactivity against Hexokinase from other tissues and species is expected based on sequence homology.
Formulation:	0.02 M Potassium Phosphate, 0.15 M Sodium Chloride, pH 7.2
Concentration:	1.0 mg/mL - lot specific
Conjugation:	HRP
Storage:	Store vial at -20° C or below prior to opening. This vial contains a relatively low volume of reagent (25 µL). To minimize loss of volume dilute 1:10 by adding 225 µL of the buffer stated above directly to the vial. Recap, mix thoroughly and briefly centrifuge to collect the volume at the bottom of the vial. Use this intermediate dilution when calculating final dilutions as recommended below. Store the vial at -20°C or below after dilution. Avoid cycles of freezing and thawing.
Stability:	Expiration date is one (1) year from date of receipt.
Database Link:	P04806



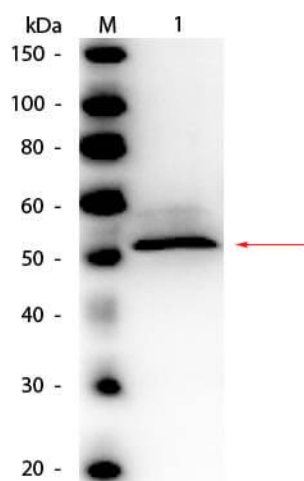
[View online »](#)

Background: HEXOKINASE Antibody is specific for hexokinase. Hexokinase is an enzyme that phosphorylates hexoses (six-carbon sugars), forming hexose phosphate. In most organisms, glucose is the most important substrate of hexokinases, and glucose-6-phosphate the most important product. Hexokinases should not be confused with glucokinase, which is a specific isoform of hexokinase. While other hexokinases are capable of phosphorylating several hexoses, glucokinase acts with a 50-fold lower substrate affinity and its only hexose substrate is glucose. Anti Hexokinase is ideal for investigators involved in glucose energy metabolism, enzymes and AKT signaling research.

Synonyms: rabbit anti-Hexokinase antibody HRP conjugation, peroxidase conjugation rabbit anti-Hexokinase antibody, DKFZp686M1669 antibody, Hexokinase 2 antibody, Hexokinase 2 muscle antibody, Hexokinase type II antibody, HEX1, HKB

Note: Anti-HEXOKINASE Peroxidase Conjugated Antibody has been tested by ELISA and western blot and can be used in applications such as Immunohistochemistry (IHC), and Immunofluorescence (IF). Specific conditions should be optimized by researcher.

Product images:



Western Blot of Rabbit anti-Hexokinase Antibody Peroxidase Conjugated. Lane 1: Hexokinase. Load: 50 ng per lane. Primary antibody: Rabbit anti-Hexokinase Antibody Peroxidase Conjugated at 1:1,000 overnight at 4°C. Secondary antibody: n/a Block: MB-070 for 30 min at RT. Predicted/Observed size: 54 kDa, 54 kDa for Hexokinase.