

Product datasheet for **TA396986S**

ALD2 Rabbit Polyclonal Antibody

Product data:

Product Type:	Primary Antibodies
Applications:	ELISA, IP, WB
Recommended Dilution:	WB: 1:500 - 1:5,000 ELISA: 1:5,000 - 1:20,000
Host:	Rabbit
Clonality:	Polyclonal
Immunogen:	Aldehyde Dehydrogenase [Yeast]
Specificity:	Aldehyde dehydrogenase is an IgG fraction antibody purified from monospecific antiserum by a multi-step process which includes delipidation, salt fractionation and ion exchange chromatography followed by extensive dialysis against the buffer stated above. Assay by immunoelectrophoresis resulted in a single precipitin arc against anti-Peroxidase, anti-Rabbit Serum as well as purified and partially purified Aldehyde Dehydrogenase [Yeast]. Cross reactivity against Aldehyde Dehydrogenase from other sources is unknown.
Formulation:	0.02 M Potassium Phosphate, 0.15 M Sodium Chloride, pH 7.2
Concentration:	1.0 mg/mL - lot specific
Conjugation:	HRP
Storage:	Store vial at -20° C or below prior to opening. This vial contains a relatively low volume of reagent (25 µL). To minimize loss of volume dilute 1:10 by adding 225 µL of the buffer stated above directly to the vial. Recap, mix thoroughly and briefly centrifuge to collect the volume at the bottom of the vial. Use this intermediate dilution when calculating final dilutions as recommended below. Store the vial at -20°C or below after dilution. Avoid cycles of freezing and thawing.
Stability:	Expiration date is one (1) year from date of receipt.
Database Link:	<u>P47771</u>
Background:	Aldehyde dehydrogenase are a group of enzymes that catalyze the oxidation (dehydrogenation) of aldehydes. Aldehyde dehydrogenase is a polymorphic enzyme responsible for the oxidation of aldehydes to carboxylic acids, which leave the liver and are metabolized by the body's muscle and heart. ALDH2 also plays a crucial role in maintaining low blood levels of acetaldehyde during alcohol oxidation.

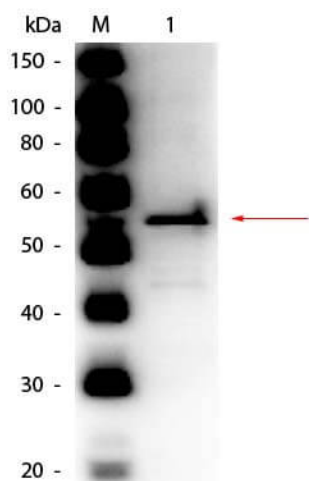


[View online »](#)

Synonyms: rabbit anti-Aldehyde Dehydrogenase Antibody Peroxidase Conjugation, HRP conjugated anti-Aldehyde Dehydrogenase Antibody, Aldehyde dehydrogenase [NAD(P)+] 1, ALD2, ALD5, ALD

Note: Anti-Aldehyde Dehydrogenase Peroxidase Conjugated Antibody has been tested by ELISA and western blot and is assayed against 1.0 ug of Aldehyde Dehydrogenase [Yeast] in a standard capture ELISA using ABTS (2,2'-azino-bis-[3-ethylbenthiazoline-6-sulfonic acid]) code # ABTS-100 as a substrate for 30 minutes at room temperature. A working dilution of 1:10,000 to 1:50,000 of the reconstitution concentration is suggested for this product.

Product images:



Western Blot of Rabbit anti-Aldehyde Dehydrogenase (yeast) Antibody Peroxidase Conjugated. Lane 1: Aldehyde Dehydrogenase (yeast). Load: 50 ng per lane. Primary antibody: Rabbit anti-Aldehyde Dehydrogenase (yeast) Antibody Peroxidase Conjugated at 1:1,000 overnight at 4°C. Secondary antibody: n/a. Block: MB-070 for 30 min at RT. Predicted/Observed size: 55 kDa, 55 kDa for Aldehyde Dehydrogenase (yeast).