

Product datasheet for **TA396982**

PAP3 Rabbit Polyclonal Antibody

Product data:

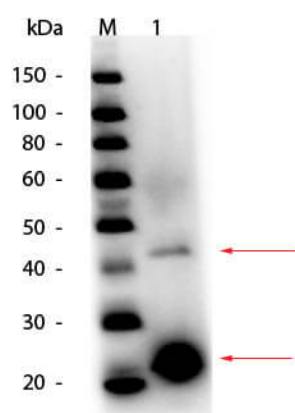
Product Type:	Primary Antibodies
Applications:	ELISA, WB
Recommended Dilution:	WB: 1:250
Host:	Rabbit
Clonality:	Polyclonal
Immunogen:	Acid Phosphatase [Potato]
Specificity:	Acid Phosphatase is an IgG fraction antibody purified from monospecific antiserum by a multi-step process which includes delipidation, salt fractionation and ion exchange chromatography followed by extensive dialysis against the buffer stated above. Assay by immunoelectrophoresis resulted in a single precipitin arc against anti-peroxidase, anti-Rabbit Serum as well as purified and partially purified Acid Phosphatase [Potato]. Cross reactivity against Acid Phosphatase from other tissues and species may occur but have not been specifically determined.
Formulation:	0.02 M Potassium Phosphate, 0.15 M Sodium Chloride, pH 7.2
Reconstitution Method:	Restore with deionized water (or equivalent) - Reconstitution Volume: 2.0 mL
Concentration:	lot specific
Conjugation:	HRP
Storage:	Store vial at -20° C or below prior to opening. This vial contains a relatively low volume of reagent (25 µL). To minimize loss of volume dilute 1:10 by adding 225 µL of the buffer stated above directly to the vial. Recap, mix thoroughly and briefly centrifuge to collect the volume at the bottom of the vial. Use this intermediate dilution when calculating final dilutions as recommended below. Store the vial at -20°C or below after dilution. Avoid cycles of freezing and thawing.
Stability:	Expiration date is one (1) year from date of receipt.
Database Link:	Q6J5M8



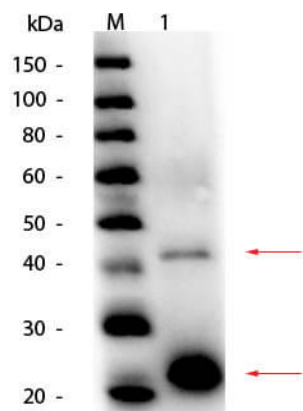
[View online »](#)

- Background:** Acid Phosphatase is a phosphatase, a type of enzyme, used to free attached phosphate groups from other molecules during digestion. It is basically a phosphomonoesterase. It is stored in lysosomes and functions when these fuse with endosomes, which are acidified while they function; therefore, it has an acid pH optimum. Different forms of acid phosphatase are found in different organs, and their serum levels are used to evaluate the success of the surgical treatment of prostate cancer.
- Synonyms:** rabbit anti-Acid Phosphatase Antibody Peroxidase Conjugation, HRP conjugated rabbit anti-Acid Phosphatase Antibody, Acid phosphatase 1 soluble antibody, PAP3, Acid phosphatase of erythrocyte antibody, Adipocyte acid phosphatase antibody, Cytoplasmic phosphotyrosyl protein phosphatase antibody, HAAP antibody
- Note:** Anti-Acid Phosphatase Peroxidase Conjugated Antibody has been tested by dot blot and western blot and is suitable for use in ELISA and immunohistochemistry. Specific conditions for reactivity should be optimized by the end user.

Product images:



Western Blot of Acid Phosphatase (Potato) Antibody. Lane 1: Acid Phosphatase (Potato). Load: 50 ng per lane. Primary antibody: Acid Phosphatase Antibody at 1:1,000 overnight at 4°C. Secondary antibody: HRP rabbit secondary antibody at 1:40,000 for 30 min at RT. Block: MB-070 for 30 min at RT. Predicted/Observed size: 49 kDa/42-45kDa for Acid Phosphatase (Potato) Protein. Other band(s): Acid Phosphatase monomer fragmentation.



Western Blot of Acid Phosphatase (Potato) Antibody. Lane 1: Acid Phosphatase (Potato). Load: 50 ng per lane. Primary antibody: Acid Phosphatase Antibody at 1:1,000 overnight at 4°C. Secondary antibody: HRP rabbit secondary antibody at 1:40,000 for 30 min at RT. Block: MB-070 for 30 min at RT. Predicted/Observed size: 49 kDa/42-45kDa for Acid Phosphatase (Potato) Protein. Other band(s): Acid Phosphatase monomer fragmentation.