

Product datasheet for **TA396971S**

AVD Rabbit Polyclonal Antibody

Product data:

Product Type:	Primary Antibodies
Applications:	ELISA, IHC, WB
Recommended Dilution:	WB: 1:1,000 - 1:10,000 IHC: 1:1,000 - 1:5,000 ELISA: 1:2,000 - 1:20,000
Host:	Rabbit
Clonality:	Polyclonal
Immunogen:	Avidin (Hen Egg White)
Specificity:	Anti-Avidin is an IgG fraction antibody purified from monospecific antiserum by a multi-step process which includes delipidation, salt fractionation and ion exchange chromatography followed by extensive dialysis against the buffer stated above. Assay by immunoelectrophoresis resulted in a single precipitin arc against anti-Rabbit Serum as well as purified and partially purified Avidin [Hen Egg White]. No cross reactivity occurs against Streptavidin.
Formulation:	0.02 M Potassium Phosphate, 0.15 M Sodium Chloride, pH 7.2
Concentration:	1 mg/ml - lot specific
Conjugation:	Unconjugated
Storage:	Store vial at -20° C or below prior to opening. This vial contains a relatively low volume of reagent (25 µL). To minimize loss of volume dilute 1:10 by adding 225 µL of the buffer stated above directly to the vial. Recap, mix thoroughly and briefly centrifuge to collect the volume at the bottom of the vial. Use this intermediate dilution when calculating final dilutions as recommended below. Store the vial at -20°C or below after dilution. Avoid cycles of freezing and thawing.
Stability:	Expiration date is one (1) year from date of receipt.
Database Link:	P02701



[View online »](#)

Background:

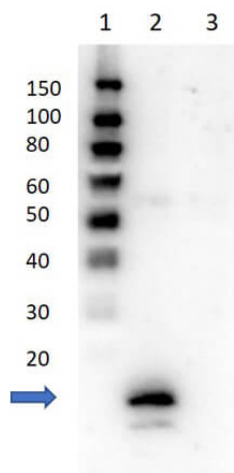
Avidin is a glycoprotein with a molecular weight of approximately 62.4 kDa. Avidin is a biotin binding protein that shows high sequence homology in birds, reptiles and amphibians. Hen egg white avidin is a tetrameric protein composed of four identical subunits, each with the ability to bind biotin with high affinity and specificity ($K_d \sim 10^{15} M$). In biotechnology, the functional consequence of tetrameric biotin binding is signal amplification. Biotin-avidin bridging is a great way to increase signal strength while maintaining specificity. The sequence of avidin only shows 30% homology with streptavidin, and anti-avidin and anti-streptavidin antibodies are not immunologically cross reactive.

Synonyms:

rabbit anti-Avidin Antibody, rabbit avidin egg white antibody, rabbit Anti Avidin

Note:

Anti-Avidin has been tested by western blot and is suitable for ELISA and immunohistochemistry, as well as other assays requiring lot-to-lot consistency.

Product images:

Western blot of Rabbit Anti-Avidin Antibody. Lane 1: Molecular Weight Marker. Lane 2: Avidin. Lane 3: Streptavidin. Primary Antibody: Anti-Avidin at 1:1000 overnight at 2-8°C. Secondary Antibody: Goat Anti-Rabbit IgG HRP (p/n 611-103-122) at 1:40,000 for 30 min at RT. Block: 0.75% Casein/TBS for 30 min. Expect MW: ~15.8 kDa. Exposure: 8 secs.