

## Product datasheet for **TA396968S**

### **RNASE1 Rabbit Polyclonal Antibody**

#### **Product data:**

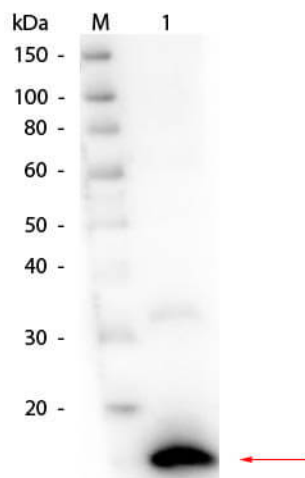
<b>Product Type:</b>	Primary Antibodies
<b>Applications:</b>	ELISA, IP, WB
<b>Recommended Dilution:</b>	<b>WB:</b> 1:500 - 1:5,000 <b>ELISA:</b> 1:5,000 - 1:20,000
<b>Host:</b>	Rabbit
<b>Clonality:</b>	Polyclonal
<b>Immunogen:</b>	Ribonuclease A [Bovine pancreas]
<b>Specificity:</b>	Anti-Ribonuclease A is an IgG fraction antibody purified from monospecific antiserum by a multi-step process which includes delipidation, salt fractionation and ion exchange chromatography followed by extensive dialysis against the buffer stated above. Assay by immunoelectrophoresis resulted in a single precipitin arc against anti-Rabbit Serum as well as purified and partially purified Ribonuclease A [Bovine pancreas]. Cross reactivity against Ribonuclease A from other tissues and species may occur but have not been specifically determined.
<b>Formulation:</b>	0.02 M Potassium Phosphate, 0.15 M Sodium Chloride, pH 7.2
<b>Concentration:</b>	1.0 mg/ml - lot specific
<b>Conjugation:</b>	Unconjugated
<b>Storage:</b>	Store vial at -20° C or below prior to opening. This vial contains a relatively low volume of reagent (25 µL). To minimize loss of volume dilute 1:10 by adding 225 µL of the buffer stated above directly to the vial. Recap, mix thoroughly and briefly centrifuge to collect the volume at the bottom of the vial. Use this intermediate dilution when calculating final dilutions as recommended below. Store the vial at -20°C or below after dilution. Avoid cycles of freezing and thawing.
<b>Stability:</b>	Expiration date is one (1) year from date of receipt.
<b>Database Link:</b>	<a href="#">P61823</a>



[View online »](#)

- Background:** Pancreatic ribonuclease is an endonuclease that catalyzes the cleavage of RNA on the 3' side of pyrimidine nucleotides. It acts on single-stranded and double-stranded RNA. This ribonuclease can destabilize or unwind the DNA helix by complexing with single-stranded DNA; this complex arises by an extended multisite cation-anion interaction between the lysine and arginine residues of the enzyme and the phosphate groups of the nucleotides. It has endonucleolytic cleavage to nucleoside 3'-phosphates and 3'-phosphooligonucleotides ending in Cp or Up with 2',3'-cyclic phosphate intermediates.
- Synonyms:** rabbit anti-Ribonuclease A Antibody, Pancreatic ribonuclease antibody, Rib 1 antibody, Rib1 antibody, Ribonuclease a family 1 antibody, Ribonuclease pancreatic antibody, Ribonuclease RNase A family 1 antibody, Ribonuclease RNase A family 1 pancreatic antibody
- Note:** Ribonuclease A Antibody has been tested by western blot and is suitable to be assayed against 1.0 ug of Ribonuclease A [Bovine pancreas] in a standard ELISA using Peroxidase conjugated Affinity Purified anti-Rabbit IgG [H&L] (Goat) code #611-1302 and (ABTS (2,2'-azino-bis-[3-ethylbenthiozoline-6-sulfonic acid]) code # ABTS-100 as a substrate for 30 minutes at room temperature. A working dilution of 1:40,000 to 1:180,000 is suggested for this product.

### Product images:



Western Blot of Rabbit anti-Ribonuclease A (Bovine Pancreas) Antibody. Lane 1: Ribonuclease A (Bovine Pancreas). Load: 50 ng per lane. Primary antibody: Ribonuclease A (Bovine Pancreas) Antibody at 1:1,000 overnight at 4°C. Secondary antibody: HRP rabbit secondary antibody (p/n 611-103-122) at 1:40,000 for 30 min at RT. Block: (p/n MB-070) for 30 min at RT. Predicted/Observed size: 16.5 kDa, 16.5 kDa for Ribonuclease A.