

Product datasheet for **TA396960S**

ansB Rabbit Polyclonal Antibody

Product data:

Product Type:	Primary Antibodies
Applications:	ELISA, IP, WB
Recommended Dilution:	WB: 1:500 - 1:3,000 ELISA: 1:5,000 - 1:25,000
Reactivity:	Escherichia coli
Host:	Rabbit
Clonality:	Polyclonal
Immunogen:	Asparaginase [E. coli]
Specificity:	Anti-L-Asparaginase antibody is an IgG fraction antibody purified from monospecific antiserum by a multi-step process which includes delipidation, salt fractionation and ion exchange chromatography followed by extensive dialysis against the buffer stated above. Assay by immunoelectrophoresis resulted in a single precipitin arc against anti-Rabbit Serum as well as purified and partially purified Asparaginase [E. coli]. Cross reactivity against Asparaginase from other tissues and species may occur but have not been specifically determined.
Formulation:	0.02 M Potassium Phosphate, 0.15 M Sodium Chloride, pH 7.2
Reconstitution Method:	Restore with deionized water (or equivalent) - Reconstitution Volume: 25µl (25-250µl)
Concentration:	1.0 mg/ml - lot specific
Conjugation:	Unconjugated
Storage:	Store vial at -20° C or below prior to opening. This vial contains a relatively low volume of reagent (25 µL). To minimize loss of volume dilute 1:10 by adding 225 µL of the buffer stated above directly to the vial. Recap, mix thoroughly and briefly centrifuge to collect the volume at the bottom of the vial. Use this intermediate dilution when calculating final dilutions as recommended below. Store the vial at -20°C or below after dilution. Avoid cycles of freezing and thawing.
Stability:	Expiration date is one (1) year from date of receipt.
Database Link:	<u>P00805</u>



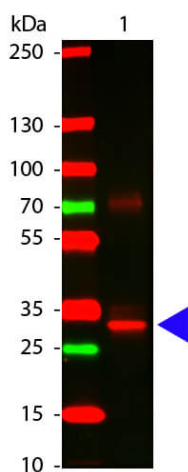
[View online »](#)

Background: L-Asparaginase antibody detects bacterial Asparaginase. Asparaginase is an enzyme that catalyzes the hydrolysis of asparagine to aspartic acid. Asparaginases are naturally occurring enzymes expressed and produced by microorganisms. Colaspase is also known as L-asparaginase (E. coli). Anti-L-Asparaginase antibody is ideal for investigators involved enzyme research.

Synonyms: rabbit anti-L-Asparaginase Antibody, L ASNase II antibody, Ansa antibody, AnsB antibody, Colaspase antibody, Cytoplasmic asparaginase I antibody, L ASNase I antibody, L asparaginase II precursor antibody, L asparagine amidohydrolase I antibody

Note: Anti-L-Asparaginase antibody has been tested by ELISA and western blot and is assayed in western blot and against 1.0 ug of Asparaginase [E. coli] in a standard ELISA using Peroxidase conjugated Affinity Purified anti-Rabbit IgG [H&L] (Goat) and (ABTS (2,2'-azino-bis-[3-ethylbenthiiazoline-6-sulfonic acid]) as a substrate for 30 minutes at room temperature. A working dilution of 1:100,000 to 1:400,000 is suggested for this product.

Product images:



Western Blot of Rabbit anti-L-Asparaginase Antibody. Lane 1: L-Asparaginase. Load: 100 ng per lane. Primary antibody: L-Asparaginase antibody at 1:1000 for overnight at 4°C. Secondary antibody: DyLight™ 649 rabbit secondary antibody (p/n 611-143-002) at 1:20,000 for 30 min at RT. Block: (p/n MB-070) for 30 min at RT. Predicted/Observed size: 32 kDa for L-Asparaginase. Other band(s): L-Asparaginase splice variants and isoforms.