

## Product datasheet for **TA396957S**

### CELA1 Rabbit Polyclonal Antibody

#### Product data:

|                       |  |
|-----------------------|--|
| Product Type:         | Primary Antibodies   |
| Applications:         | ELISA, WB  |
| Recommended Dilution: | <b>WB:</b> 1:500 - 1:3,000<br><b>ELISA:</b> 1:5,000 - 1:25,000   |
| Reactivity:           | Mouse  |
| Host:                 | Rabbit   |
| Clonality:            | Polyclonal   |
| Immunogen:            | Elastase [Porcine Pancreas]  |
| Specificity:          | Anti-Elastase is an IgG fraction antibody purified from monospecific antiserum by a multi-step process which includes delipidation, salt fractionation and ion exchange chromatography followed by extensive dialysis against the buffer stated above. Assay by immunoelectrophoresis resulted in a single precipitin arc against anti-Rabbit Serum as well as purified and partially purified Elastase [Porcine Pancreas]. Cross reactivity was reported for mouse Elastase (mouse embryonic pancreas). Cross reactivity against Elastase from other tissues and species has not been determined. |
| Formulation:          | 0.02 M Potassium Phosphate, 0.15 M Sodium Chloride, pH 7.2   |
| Concentration:        | lot specific   |
| Conjugation:          | Unconjugated   |
| Storage:              | Store vial at -20° C or below prior to opening. This vial contains a relatively low volume of reagent (25 µL). To minimize loss of volume dilute 1:10 by adding 225 µL of the buffer stated above directly to the vial. Recap, mix thoroughly and briefly centrifuge to collect the volume at the bottom of the vial. Use this intermediate dilution when calculating final dilutions as recommended below. Store the vial at -20°C or below after dilution. Avoid cycles of freezing and thawing.   |
| Stability:            | Expiration date is one (1) year from date of receipt.  |
| Database Link:        | <a href="#">P00772</a>   |



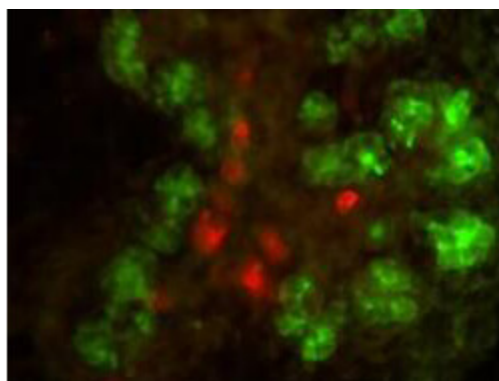
[View online »](#)

**Background:** Anti elastase antibody detects elastase enzyme. Elastase breaks down elastin, an elastic fiber that, together with collagen, determines the mechanical properties of connective tissue. The specific peptide bonds cleaved are those on the carboxy side of small, hydrophobic amino acids such as glycine, alanine, and valine. Anti-Elastase Antibody is ideal for investigators in Cancer, Immunology, and Cardiovascular research.

**Synonyms:** rabbit anti-Elastase Antibody, Fecal pancreatic elastase 1 antibody, HLE antibody, Medullasin antibody, Pancreatic elastase IIA antibody, PE 1 antibody, PE1 antibody, Protease E antibody

**Note:** Anti-Elastase Antibody has been tested by ELISA, western blot, and immunofluorescence. This product is assayed against 1.0 ug of Elastase [Porcine Pancreas] in a standard ELISA using Peroxidase conjugated Affinity Purified anti-Rabbit IgG [H&L] (Goat) code #611-1302 and (ABTS (2,2'-azino-bis-[3-ethylbenzothiazoline-6-sulfonic acid]) code # ABTS-100 as a substrate for 30 minutes at room temperature. A working dilution of 1:1,000 to 1:5,400 is suggested for Anti-Elastase Antibody. An investigator has reported that this antibody works very well on sections of mouse embryonic pancreas tissue, specifically staining developing exocrine cells.

### Product images:



Double immunofluorescence microscopy of Rabbit anti-Elastase antibody and anti-Insulin antibody. Tissue: mouse embryonic gut tissue. Fixation: 1 h in 4% PFA. Antigen retrieval: not required. Primary antibody: antibodies at 10 µg/mL for 1 h at RT. Secondary antibody: Fluorescein rabbit secondary antibody at 1:10,000 for 45 min at RT. Localization: elastase is secreted, extracellular. Staining: elastase as green fluorescent signal with insulin staining in red.