

## Product datasheet for **TA396953S**

### DLD Rabbit Polyclonal Antibody

#### Product data:

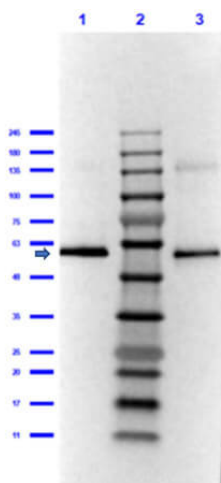
Product Type:	Primary Antibodies
Applications:	ELISA, IP, WB
Recommended Dilution:	<b>WB:</b> 1:500 - 1:5,000 <b>ELISA:</b> 1:5,000 - 1:20,000
Reactivity:	Porcine
Host:	Rabbit
Clonality:	Polyclonal
Immunogen:	Lipoamide Dehydrogenase [Porcine Heart]
Specificity:	Anti-Lipoamide Dehydrogenase is an IgG fraction antibody purified from monospecific antiserum by a multi-step process which includes delipidation, salt fractionation and ion exchange chromatography followed by extensive dialysis against the buffer stated above. Assay by immunoelectrophoresis resulted in a single precipitin arc against anti-Rabbit Serum as well as purified and partially purified Lipoamide Dehydrogenase [Porcine Heart]. Cross reactivity against Lipoamide Dehydrogenase from other tissues and species may occur but have not been specifically determined.
Formulation:	0.02 M Potassium Phosphate, 0.15 M Sodium Chloride, pH 7.2
Concentration:	lot specific
Conjugation:	Unconjugated
Storage:	Store vial at -20° C or below prior to opening. This vial contains a relatively low volume of reagent (25 µL). To minimize loss of volume dilute 1:10 by adding 225 µL of the buffer stated above directly to the vial. Recap, mix thoroughly and briefly centrifuge to collect the volume at the bottom of the vial. Use this intermediate dilution when calculating final dilutions as recommended below. Store the vial at -20°C or below after dilution. Avoid cycles of freezing and thawing.
Stability:	Expiration date is one (1) year from date of receipt.
Database Link:	<a href="#">P09623</a>



[View online »](#)

- Background:** Lipoamide dehydrogenase is a component of the glycine cleavage system as well as an E3 component of the alpha-ketoacid dehydrogenase complexes (pyruvate-, alpha-ketoglutarate-, and branched-chain amino acid-dehydrogenase complex). In monomeric form it has additional moonlighting function as serine protease. It is involved in the hyperactivation of spermatazoa during capacitation and in the spermatazoal acrosome reaction.
- Synonyms:** rabbit anti-Lipoamide Dehydrogenase Antibody, Dihydrolipoyl dehydrogenase mitochondrial, Dihydrolipoamide dehydrogenase, Lipoamide Dehydrogenase
- Note:** Anti-Lipoamide Dehydrogenase has been tested by ELISA and western blot and is assayed against 1.0 ug of Lipoamide Dehydrogenase [Porcine Heart] in a standard ELISA using Peroxidase conjugated Affinity Purified anti-Rabbit IgG [H&L] (Goat) code #611-1302 and (ABTS (2,2'-azino-bis-[3-ethylbenthiiazoline-6-sulfonic acid]) code # ABTS-100 as a substrate for 30 minutes at room temperature. A working dilution of 1:7,000 to 1:30,000 of the reconstitution concentration is suggested for this product.

### Product images:



Western Blot of Rabbit Anti-Lipoamide Dehydrogenase Antibody. Lane 1: Lipoamide Dehydrogenase Reduced [0.05µg]. Lane 2: Opal Prestained Molecular Weight Marker (p/n MB210-0500). Lane 3: Lipoamide Dehydrogenase Non-Reduced [0.05µg]. Primary Antibody: Anti-Lipoamide Dehydrogenase (p/n 200-4160) at 1:1000 overnight at 2-8°C. Secondary Antibody: Goat anti-Rabbit IgG [H&L] HRP (p/n 611-1302) at 1:40,000 for 30mins at RT. Blocking: BlockOut buffer (p/n MB-073) for 1hr at RT. Expected MW: 55kDa. Exp: 10 secs.