

## Product datasheet for **TA396952**

### DLD Rabbit Polyclonal Antibody

#### Product data:

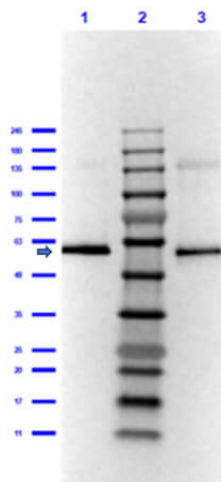
Product Type:	Primary Antibodies
Applications:	ELISA, IP, WB
Recommended Dilution:	<b>WB:</b> 1:500 - 1:5,000 <b>ELISA:</b> 1:5,000 - 1:20,000
Reactivity:	Porcine
Host:	Rabbit
Clonality:	Polyclonal
Immunogen:	Lipoamide Dehydrogenase [Porcine Heart]
Specificity:	Anti-Lipoamide Dehydrogenase is an IgG fraction antibody purified from monospecific antiserum by a multi-step process which includes delipidation, salt fractionation and ion exchange chromatography followed by extensive dialysis against the buffer stated above. Assay by immunoelectrophoresis resulted in a single precipitin arc against anti-Rabbit Serum as well as purified and partially purified Lipoamide Dehydrogenase [Porcine Heart]. Cross reactivity against Lipoamide Dehydrogenase from other tissues and species may occur but have not been specifically determined.
Formulation:	0.02 M Potassium Phosphate, 0.15 M Sodium Chloride, pH 7.2
Reconstitution Method:	Restore with deionized water (or equivalent) - Reconstitution Volume: 100 µL
Concentration:	1.0 mg/mL - lot specific
Conjugation:	Unconjugated
Storage:	Store vial at 4° C prior to restoration. For extended storage aliquot contents and freeze at -20° C or below. Avoid cycles of freezing and thawing. Centrifuge product if not completely clear after standing at room temperature. This product is stable for several weeks at 4° C as an undiluted liquid. Dilute only prior to immediate use.
Stability:	Expiration date is one (1) year from date of receipt.
Database Link:	<a href="#">P09623</a>



[View online »](#)

- Background:** Lipoamide dehydrogenase is a component of the glycine cleavage system as well as an E3 component of the alpha-ketoacid dehydrogenase complexes (pyruvate-, alpha-ketoglutarate-, and branched-chain amino acid-dehydrogenase complex). In monomeric form it has additional moonlighting function as serine protease. It is involved in the hyperactivation of spermatazoa during capacitation and in the spermatazoal acrosome reaction.
- Synonyms:** rabbit anti-Lipoamide Dehydrogenase Antibody, Dihydrolipoyl dehydrogenase mitochondrial, Dihydrolipoamide dehydrogenase, Lipoamide Dehydrogenase
- Note:** Anti-Lipoamide Dehydrogenase has been tested by ELISA and western blot and is assayed against 1.0 ug of Lipoamide Dehydrogenase [Porcine Heart] in a standard ELISA using Peroxidase conjugated Affinity Purified anti-Rabbit IgG [H&L] (Goat) code #611-1302 and (ABTS (2,2'-azino-bis-[3-ethylbenthiazoline-6-sulfonic acid]) code # ABTS-100 as a substrate for 30 minutes at room temperature. A working dilution of 1:7,000 to 1:30,000 of the reconstitution concentration is suggested for this product.

### Product images:



Western Blot of Rabbit Anti-Lipoamide Dehydrogenase Antibody. Lane 1: Lipoamide Dehydrogenase Reduced [0.05µg]. Lane 2: Opal Prestained Molecular Weight Marker (p/n MB210-0500). Lane 3: Lipoamide Dehydrogenase Non-Reduced [0.05µg]. Primary Antibody: Anti-Lipoamide Dehydrogenase (p/n 200-4160) at 1:1000 overnight at 2-8°C. Secondary Antibody: Goat anti-Rabbit IgG [H&L] HRP (p/n 611-1302) at 1:40,000 for 30mins at RT. Blocking: BlockOut buffer (p/n MB-073) for 1hr at RT. Expected MW: 55kDa. Exp: 10 secs.