

Product datasheet for **TA396951S**

HXK2 Rabbit Polyclonal Antibody

Product data:

Product Type:	Primary Antibodies
Applications:	ELISA, IHC, WB
Recommended Dilution:	WB: 1:1,000 - 1:5,000 IHC: User Optimized ELISA: 1:3,000 - 1:10,000
Host:	Rabbit
Clonality:	Polyclonal
Immunogen:	Anti-Hexokinase Antibody was produced by repeated immunizations with yeast hexokinase protein.
Specificity:	Anti-Hexokinase is an IgG fraction antibody purified from monospecific antiserum by a multi-step process which includes delipidation, salt fractionation and ion exchange chromatography followed by extensive dialysis against the buffer stated above. Assay by immunoelectrophoresis resulted in a single precipitin arc against anti-Rabbit Serum as well as purified and partially purified Hexokinase [Yeast]. Cross reactivity against Hexokinase from other tissues and species may occur but have not been specifically determined.
Formulation:	0.02 M Potassium Phosphate, 0.15 M Sodium Chloride, pH 7.2
Concentration:	1.0 mg/ml - lot specific
Conjugation:	Unconjugated
Storage:	Store vial at -20° C or below prior to opening. This vial contains a relatively low volume of reagent (25 µL). To minimize loss of volume dilute 1:10 by adding 225 µL of the buffer stated above directly to the vial. Recap, mix thoroughly and briefly centrifuge to collect the volume at the bottom of the vial. Use this intermediate dilution when calculating final dilutions as recommended below. Store the vial at -20°C or below after dilution. Avoid cycles of freezing and thawing.
Stability:	Expiration date is one (1) year from date of receipt.
Database Link:	P04806



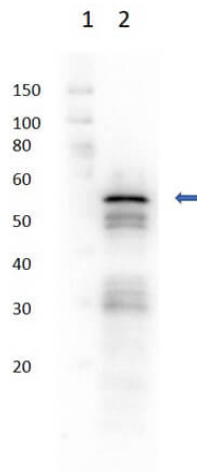
[View online »](#)

Background: Anti-Hexokinase antibody detects hexokinase. Hexokinase is an enzyme that phosphorylates hexoses (six-carbon sugars), forming hexose phosphate. In most organisms, glucose is the most important substrate of hexokinases, and glucose-6-phosphate the most important product. Anti-Hexokinase Antibody is ideal for investigators involved in Cell Signaling, Neuroscience and Signal Transduction research.

Synonyms: rabbit anti-Hexokinase Antibody, DKFZp686M1669 antibody, Hexokinase 2 antibody, Hexokinase 2 muscle antibody, Hexokinase type II antibody

Note: Anti-Hexokinase Antibody has been tested by western blotting and for ELISA and is suitable for IHC. Researchers should determine optimal titers for applications that are not stated below.

Product images:



Western Blot of Rabbit Anti-Hexokinase Antibody. Lane 1: Molecular Weight Marker. Lane 2: Hexokinase. Primary Antibody: Anti-Hexokinase at 1:1000 overnight in 2-8°C. Secondary Antibody: Goat Anti-Rabbit IgG HRP (p/n 611-103-122) at 1:40,000 for 30 mins at RT. Block: BlockOut Buffer (p/n MB-073) for 30 mins at RT. Expect MW: ~54kDa.