

## Product datasheet for **TA396950**

### HXK2 Rabbit Polyclonal Antibody

#### Product data:

Product Type:	Primary Antibodies
Applications:	ELISA, IHC, WB
Recommended Dilution:	<b>WB:</b> 1:1,000 - 1: 5,000 <b>IHC:</b> User Optimized <b>ELISA:</b> 1:3,000 - 1:10,000
Host:	Rabbit
Clonality:	Polyclonal
Immunogen:	Anti-Hexokinase Antibody was produced by repeated immunizations with yeast hexokinase protein.
Specificity:	Anti-Hexokinase is an IgG fraction antibody purified from monospecific antiserum by a multi-step process which includes delipidation, salt fractionation and ion exchange chromatography followed by extensive dialysis against the buffer stated above. Assay by immunoelectrophoresis resulted in a single precipitin arc against anti-Rabbit Serum as well as purified and partially purified Hexokinase [Yeast]. Cross reactivity against Hexokinase from other tissues and species may occur but have not been specifically determined.
Formulation:	0.02 M Potassium Phosphate, 0.15 M Sodium Chloride, pH 7.2
Reconstitution Method:	Restore with deionized water (or equivalent) - Reconstitution Volume: 100 µL
Concentration:	1.0 mg/ml - lot specific
Conjugation:	Unconjugated
Storage:	Store vial at 4° C prior to restoration. For extended storage aliquot contents and freeze at -20° C or below. Avoid cycles of freezing and thawing. Centrifuge product if not completely clear after standing at room temperature. This product is stable for several weeks at 4° C as an undiluted liquid. Dilute only prior to immediate use.
Stability:	Expiration date is one (1) year from date of receipt.
Database Link:	<a href="#">P04806</a>



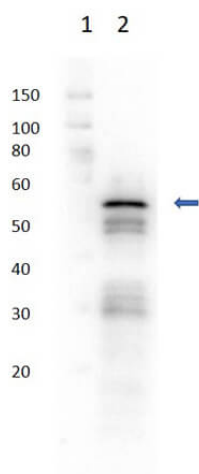
[View online »](#)

**Background:** Anti-Hexokinase antibody detects hexokinase. Hexokinase is an enzyme that phosphorylates hexoses (six-carbon sugars), forming hexose phosphate. In most organisms, glucose is the most important substrate of hexokinases, and glucose-6-phosphate the most important product. Anti-Hexokinase Antibody is ideal for investigators involved in Cell Signaling, Neuroscience and Signal Transduction research.

**Synonyms:** rabbit anti-Hexokinase Antibody, DKFZp686M1669 antibody, Hexokinase 2 antibody, Hexokinase 2 muscle antibody, Hexokinase type II antibody

**Note:** Anti-Hexokinase Antibody has been tested by western blotting and for ELISA and is suitable for IHC. Researchers should determine optimal titers for applications that are not stated below.

### Product images:



Western Blot of Rabbit Anti-Hexokinase Antibody. Lane 1: Molecular Weight Marker. Lane 2: Hexokinase. Primary Antibody: Anti-Hexokinase at 1:1000 overnight in 2-8°C. Secondary Antibody: Goat Anti-Rabbit IgG HRP (p/n 611-103-122) at 1:40,000 for 30 mins at RT. Block: BlockOut Buffer (p/n MB-073) for 30 mins at RT. Expect MW: ~54kDa.