

## Product datasheet for **TA396946S**

### CPA1 Rabbit Polyclonal Antibody

#### Product data:

Product Type:	Primary Antibodies
Applications:	ELISA, IHC, WB
Recommended Dilution:	<b>WB:</b> 1:500 - 1:3,000 <b>IHC:</b> User Optimized <b>ELISA:</b> 1:250,000
Host:	Rabbit
Clonality:	Polyclonal
Immunogen:	Carboxypeptidase A [Bovine Pancreas]
Specificity:	Anti-Carboxypeptidase A is an IgG fraction antibody purified from monospecific antiserum by a multi-step process which includes delipidation, salt fractionation and ion exchange chromatography followed by extensive dialysis against the buffer stated above. Assay by immunoelectrophoresis resulted in a single precipitin arc against anti-Rabbit Serum as well as purified and partially purified Carboxypeptidase A [Bovine Pancreas]. Cross reactivity against Carboxypeptidase A from other tissues and species may occur but have not been specifically determined.
Formulation:	0.02 M Potassium Phosphate, 0.15 M Sodium Chloride, pH 7.2
Concentration:	1.0 mg/ml - lot specific
Conjugation:	Unconjugated
Storage:	Store vial at -20° C or below prior to opening. This vial contains a relatively low volume of reagent (25 µL). To minimize loss of volume dilute 1:10 by adding 225 µL of the buffer stated above directly to the vial. Recap, mix thoroughly and briefly centrifuge to collect the volume at the bottom of the vial. Use this intermediate dilution when calculating final dilutions as recommended below. Store the vial at -20°C or below after dilution. Avoid cycles of freezing and thawing.
Stability:	Expiration date is one (1) year from date of receipt.
Database Link:	<a href="#">P00730</a>
Background:	Carboxypeptidase that catalyzes the release of a C-terminal amino acid, but has little or no action with -Asp, -Glu, -Arg, -Lys or -Pro.

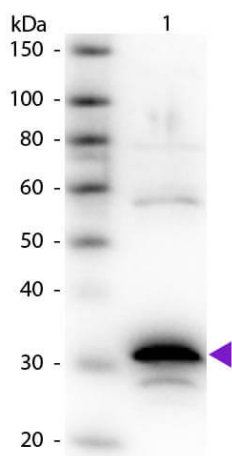


[View online »](#)

**Synonyms:** rabbit anti-Carboxypeptidase A antibody, Carboxypeptidase A1 precursor antibody, CPA1 antibody, Pancreatic carboxypeptidase A1 antibody, Procarboxypeptidase A1 pancreatic antibody

**Note:** Anti-Carboxypeptidase A has been tested by western blot and is suitable for use in ELISA and immunohistochemistry. Specific conditions for reactivity should be optimized by the end user.

**Product images:**



Western Blot of Rabbit Anti-Carboxypeptidase A primary antibody. Lane 1: Carboxypeptidase A. Load: 50 ng per lane. Primary antibody: Carboxypeptidase A primary antibody at 1:1,000 overnight at 4°C. Secondary antibody: Peroxidase rabbit secondary antibody (p/n 611-103-122) at 1:40,000 for 30 min at RT. Blocking: (p/n MB-070) for 30 min at RT. Predicted/Observed size: 34 kDa, 34 kDa for Carboxypeptidase A. Other band(s): Carboxypeptidase A splice variants and isoforms.