

Product datasheet for **TA396945**

CPA1 Rabbit Polyclonal Antibody

Product data:

Product Type:	Primary Antibodies
Applications:	ELISA, IHC, WB
Recommended Dilution:	WB: 1:500 - 1:3,000 IHC: User Optimized ELISA: 1:250,000
Host:	Rabbit
Clonality:	Polyclonal
Immunogen:	Carboxypeptidase A [Bovine Pancreas]
Specificity:	Anti-Carboxypeptidase A is an IgG fraction antibody purified from monospecific antiserum by a multi-step process which includes delipidation, salt fractionation and ion exchange chromatography followed by extensive dialysis against the buffer stated above. Assay by immunoelectrophoresis resulted in a single precipitin arc against anti-Rabbit Serum as well as purified and partially purified Carboxypeptidase A [Bovine Pancreas]. Cross reactivity against Carboxypeptidase A from other tissues and species may occur but have not been specifically determined.
Formulation:	0.02 M Potassium Phosphate, 0.15 M Sodium Chloride, pH 7.2
Reconstitution Method:	Restore with deionized water (or equivalent) - Reconstitution Volume: 100 µL
Concentration:	1.0 mg/ml - lot specific
Conjugation:	Unconjugated
Storage:	Store vial at 4° C prior to restoration. For extended storage aliquot contents and freeze at -20° C or below. Avoid cycles of freezing and thawing. Centrifuge product if not completely clear after standing at room temperature. This product is stable for several weeks at 4° C as an undiluted liquid. Dilute only prior to immediate use.
Stability:	Expiration date is one (1) year from date of receipt.
Database Link:	P00730
Background:	Carboxypeptidase that catalyzes the release of a C-terminal amino acid, but has little or no action with -Asp, -Glu, -Arg, -Lys or -Pro.

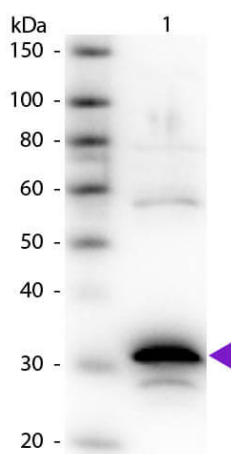


[View online »](#)

Synonyms: rabbit anti-Carboxypeptidase A antibody, Carboxypeptidase A1 precursor antibody, CPA1 antibody, Pancreatic carboxypeptidase A1 antibody, Procarboxypeptidase A1 pancreatic antibody

Note: Anti-Carboxypeptidase A has been tested by western blot and is suitable for use in ELISA and immunohistochemistry. Specific conditions for reactivity should be optimized by the end user.

Product images:



Western Blot of Rabbit Anti-Carboxypeptidase A primary antibody. Lane 1: Carboxypeptidase A. Load: 50 ng per lane. Primary antibody: Carboxypeptidase A primary antibody at 1:1,000 overnight at 4°C. Secondary antibody: Peroxidase rabbit secondary antibody (p/n 611-103-122) at 1:40,000 for 30 min at RT. Blocking: (p/n MB-070) for 30 min at RT. Predicted/Observed size: 34 kDa, 34 kDa for Carboxypeptidase A. Other band(s): Carboxypeptidase A splice variants and isoforms.