

Product datasheet for **TA396928S**

ALPI Rabbit Polyclonal Antibody

Product data:

Product Type:	Primary Antibodies
Applications:	ELISA, IHC, WB
Recommended Dilution:	WB: 1:2,000 - 1:10,000 IHC: 1:1,000 - 1:5,000 ELISA: 1:20,000 - 1:100,000
Host:	Rabbit
Clonality:	Polyclonal
Immunogen:	Alkaline Phosphatase [Calf Intestine]
Specificity:	Anti-Alkaline Phosphatase is an IgG fraction antibody purified from monospecific antiserum by a multi-step process which includes delipidation, salt fractionation and ion exchange chromatography followed by extensive dialysis against the buffer stated above. Assay by immunoelectrophoresis resulted in a single precipitin arc against anti-Rabbit Serum as well as purified and partially purified Alkaline Phosphatase [Calf Intestine]. Cross reactivity against Alkaline Phosphatase from other tissues and species may occur but have not been specifically determined.
Formulation:	0.02 M Potassium Phosphate, 0.15 M Sodium Chloride, pH 7.2
Concentration:	1.0 mg/ml - lot specific
Conjugation:	Unconjugated
Storage:	Store vial at -20° C or below prior to opening. This vial contains a relatively low volume of reagent (25 µL). To minimize loss of volume dilute 1:10 by adding 225 µL of the buffer stated above directly to the vial. Recap, mix thoroughly and briefly centrifuge to collect the volume at the bottom of the vial. Use this intermediate dilution when calculating final dilutions as recommended below. Store the vial at -20°C or below after dilution. Avoid cycles of freezing and thawing.
Stability:	Expiration date is one (1) year from date of receipt.
Database Link:	P19111
Background:	In most mammals there are four different isozymes: placental, placental-like, intestinal and tissue non-specific (liver/bone/kidney). Alkaline Phosphatase catalytic activity is phosphate monoester + H ₂ O = an alcohol + phosphate.

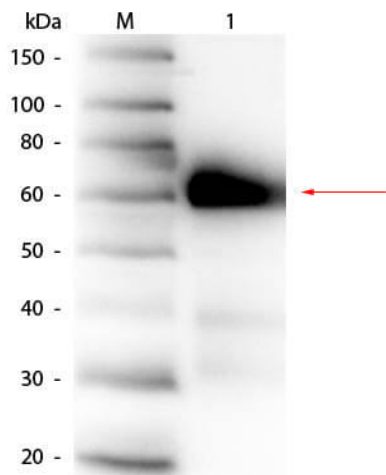


[View online »](#)

Synonyms: rabbit anti-Alkaline Phosphatase Antibody, Alkaline phosphomonoesterase antibody, ALPI antibody, Glycerophosphatase antibody, IAP antibody, Intestinal alkaline phosphatase antibody, Kasahara isozyme antibody

Note: Anti-Alkaline Phosphatase has been tested against 1.0 ug of Alkaline Phosphatase [Calf intestine] in a standard ELISA using Peroxidase conjugated Affinity Purified anti-Rabbit IgG [H&L] (Goat) code #611-1302 and (ABTS (2,2'-azino-bis-[3-ethylbenthiiazoline-6-sulfonic acid]) code # ABTS-100 as a substrate for 30 minutes at room temperature. A working dilution of 1:2,000 to 1:8,000 of the reconstitution concentration is suggested for this product.

Product images:



Western Blot of Rabbit anti-Alkaline Phosphatase (Calf Intestine) Antibody. Lane 1: Alkaline Phosphatase (Calf Intestine). Load: 50 ng per lane. Primary antibody: Rabbit anti-Alkaline Phosphatase (Calf Intestine) Antibody at 1:1,000 overnight at 4°C. Secondary antibody: HRP rabbit secondary antibody (p/n 611-103-122) at 1:40,000 for 30 min at RT. Block: (p/n MB-070) for 30 min at RT. Predicted/Observed size: 57 kDa, 60 kDa for Alkaline Phosphatase (Calf Intestine).