

Product datasheet for **TA396927S**

phoA Rabbit Polyclonal Antibody

Product data:

Product Type:	Primary Antibodies
Applications:	ELISA, WB
Recommended Dilution:	WB: 1:500 - 1:2,000 ELISA: 1:4,000 - 1:20,000
Reactivity:	Escherichia coli
Host:	Rabbit
Clonality:	Polyclonal
Immunogen:	Alkaline Phosphatase [E.coli]
Specificity:	Anti-Alkaline Phosphatase is an IgG fraction antibody purified from monospecific antiserum by a multi-step process which includes delipidation, salt fractionation and ion exchange chromatography followed by extensive dialysis against the buffer stated above. Assay by immunoelectrophoresis resulted in a single precipitin arc against anti-Rabbit Serum as well as purified and partially purified Alkaline Phosphatase [E.coli]. Cross reactivity against Alkaline Phosphatase from other tissues and species may occur but have not been specifically determined. Some minimal cross reactivity has been reported when lysates of cell extracts overproducing E.coli proteins are probed.
Formulation:	0.02 M Potassium Phosphate, 0.15 M Sodium Chloride, pH 7.2
Concentration:	1.0 mg/ml - lot specific
Conjugation:	Unconjugated
Storage:	Store vial at -20° C or below prior to opening. This vial contains a relatively low volume of reagent (25 µL). To minimize loss of volume dilute 1:10 by adding 225 µL of the buffer stated above directly to the vial. Recap, mix thoroughly and briefly centrifuge to collect the volume at the bottom of the vial. Use this intermediate dilution when calculating final dilutions as recommended below. Store the vial at -20°C or below after dilution. Avoid cycles of freezing and thawing.
Stability:	Expiration date is one (1) year from date of receipt.
Database Link:	P00634



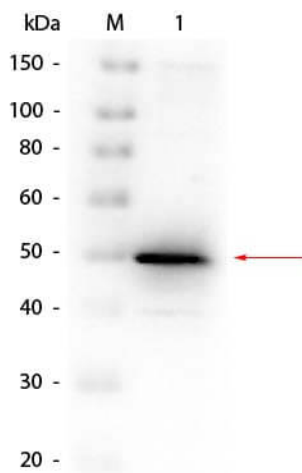
[View online »](#)

Background: This Alkaline Phosphatase is from Escherichia coli. In most mammals there are four different isozymes: placental, placental-like, intestinal and tissue non-specific (liver/bone/kidney). Alkaline Phosphatase catalytic activity is phosphate monoester + H₂O = an alcohol + phosphate.

Synonyms: rabbit anti-Alkaline Phosphatase Antibody, Akp2 antibody, ALP antibody, Nagao isozyme antibody, Placental alkaline phosphatase antibody, Placental like alkaline phosphatase antibody, PLAP 1 antibody, PLAP like antibody, Regan isozyme antibody, Kasahara isozyme antibody

Note: Anti-Alkaline Phosphatase Antibody has been tested against 1.0 ug of Alkaline Phosphatase [E.coli] in a standard ELISA using Peroxidase conjugated Affinity Purified anti-Rabbit IgG [H&L] (Goat) code #611-1302 and (ABTS (2,2'-azino-bis-[3-ethylbenthiazoline-6-sulfonic acid]) code # ABTS-100 as a substrate for 30 minutes at room temperature. A working dilution of 1:25,000 to 1:125,000 of the reconstitution concentration is suggested for this product. A 1:10,000 dilution has been reported to be useful for the detection by immunoblot of an integral membrane protein from a gram-positive organism expressed as a LacZ/PhoA chimeric derivative in E.coli. The researcher should determine optimal titers for other applications.

Product images:



Western Blot of Rabbit anti-Alkaline Phosphatase (E. Coli) Antibody. Lane 1: Alkaline Phosphatase (E. Coli). Load: 50 ng per lane. Primary antibody: Rabbit anti-Alkaline Phosphatase (E. Coli) Antibody at 1:1,000 overnight at 4°C. Secondary antibody: Peroxidase Rabbit secondary antibody (611-103-122) at 1:40,000 for 30 min at RT. Block: MB-070 for 30 min at RT. Predicted/Observed size: 50 kDa, 50 kDa for Alkaline Phosphatase (E. Coli).