

## Product datasheet for **TA396922**

### Rabbit Polyclonal Antibody

#### Product data:

Product Type:	Primary Antibodies
Applications:	ELISA, WB
Recommended Dilution:	<b>WB:</b> 1:500-1:1000 <b>ELISA:</b> 1:1000-1:2000
Reactivity:	Escherichia coli
Host:	Rabbit
Clonality:	Polyclonal
Immunogen:	Anti-Host Cell Proteins Antibody was prepared by repeated immunizations with a full range of high molecular weight (HMW) and low molecular weight (LMW) proteins from E.Coli (BL21).
Specificity:	Host Cell Protein A purified antibody is directed against high molecular weight and low molecular weight E.coli Host Cell Proteins. The product was purified from monospecific antiserum by Protein A affinity chromatography. Reactivity is directed against E.coli Host Cell Proteins. Cross-reactivity with other species is likely but has not been determined. Reactivity against homologues from other sources is not known.
Formulation:	0.02 M Potassium Phosphate, 0.15 M Sodium Chloride, pH 7.2
Reconstitution Method:	Restore with deionized water (or equivalent) - Reconstitution Volume: 100 µL
Concentration:	1.0 mg/mL - lot specific
Conjugation:	Biotin
Storage:	Store vial at 4° C prior to restoration. For extended storage aliquot contents and freeze at -20° C or below. Avoid cycles of freezing and thawing. Centrifuge product if not completely clear after standing at room temperature. This product is stable for several weeks at 4° C as an undiluted liquid. Dilute only prior to immediate use.
Stability:	Expiration date is one (1) year from date of receipt.



[View online »](#)

**Background:**

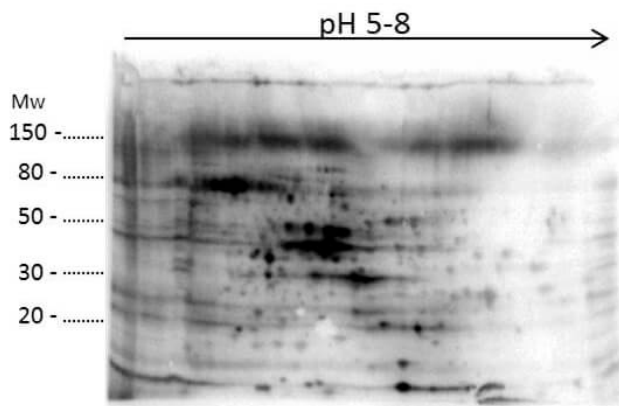
Anti-Host Cell Proteins Antibody recognizes high and low molecular weight protein fractions from E.coli. This antibody has been validated by 2D electrophoresis western blot to assure highest possible coverage of E.coli HCP. Host Cell Proteins are process-related impurities derived from a host cell expression system that may be present in trace amounts in a final drug substance. HCP Antibodies are used to detect impurities in biologically-based therapeutics. Detecting impurities often unseen by 1-D electrophoresis, a 2D electrophoresis western blot analysis delivers more complete insight into the immunocoverage of protein components of the host cell lysate.

**Synonyms:**

rabbit anti-Host Cell Protein antibody Biotin conjugation, rabbit anti-HCP antibody, rabbit anti-E.Coli HCP antibody biotin conjugated, Anti-HCP biotin

**Note:**

Anti-Host Cell Proteins Antibody detects over 300 E.coli proteins and has been tested by western blot and is suitable for ELISA.

**Product images:**


2D Western Blot of anti-E.coli Host Cell Protein antibody. Load: 35 µg Total HCP. Primary antibody: Rabbit anti-HCP antibody at 1:200 for overnight at 4°C. Secondary antibody: Goat anti-rabbit secondary antibody at 1:10,000 for 30 min at RT. Block: MB-070 for 1 hour at RT.