

Product datasheet for **TA396919S**

LOC780933 Rabbit Polyclonal Antibody

Product data:

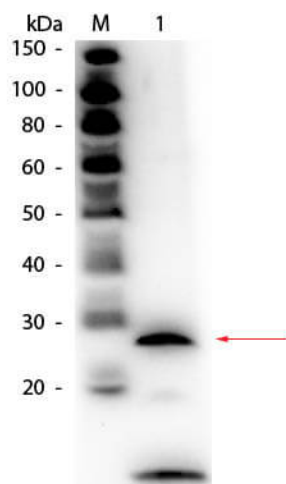
Product Type:	Primary Antibodies
Applications:	ELISA, IHC, WB
Recommended Dilution:	WB: 1:500 - 1:2,500 IHC: 1:200 - 1:1,000 ELISA: 1:2,000 - 1:10,000
Host:	Rabbit
Clonality:	Polyclonal
Immunogen:	Anti-Trypsin Antibody was produced by repeated immunizations with bovine pancreatic trypsin protein purified.
Specificity:	Trypsin Antibody is an IgG fraction purified from monospecific antiserum by a multi-step process which includes delipidation, salt fractionation and ion exchange chromatography followed by extensive dialysis against the buffer stated above. Assay by immunoelectrophoresis resulted in a single precipitin arc against anti-Biotin, anti-Rabbit Serum as well as purified and partially purified Trypsin [Bovine Pancreas]. Cross reactivity against Trypsin from other sources may occur but has not been specifically determined.
Formulation:	0.02 M Potassium Phosphate, 0.15 M Sodium Chloride, pH 7.2
Concentration:	1.0 mg/mL - lot specific
Conjugation:	Biotin
Storage:	Store vial at -20° C or below prior to opening. This vial contains a relatively low volume of reagent (25 µL). To minimize loss of volume dilute 1:10 by adding 225 µL of the buffer stated above directly to the vial. Recap, mix thoroughly and briefly centrifuge to collect the volume at the bottom of the vial. Use this intermediate dilution when calculating final dilutions as recommended below. Store the vial at -20°C or below after dilution. Avoid cycles of freezing and thawing.
Stability:	Expiration date is one (1) year from date of receipt.
Database Link:	<u>P00760</u>



[View online »](#)

- Background:** Anti-Trypsin Antibody detects trypsin. Trypsin is a serine protease found in the digestive system of many vertebrates, where it hydrolyses proteins. It belongs to the peptidase S1 family. Trypsin is produced in the pancreas as the inactive proenzyme trypsinogen. It cleaves peptides on the C-terminal side of lysine and arginine amino acid residues. Trypsin hydrolyzes ester and amide linkages of several synthetic substrates. Anti-Trypsin Antibody is ideal for investigators involved in Cell Signaling, Neuroscience, Signal Transduction and Biochemistry research.
- Synonyms:** rabbit anti-trypsin antibody biotin conjugation, biotin conjugated rabbit anti-trypsin antibody, Anionic trypsinogen antibody, Beta trypsin antibody, Brain trypsinogen antibody, Cationic Trypsinogen antibody, Digestive Zymogen antibody, Mesotrypsin antibody, Mesotrypsinogen antibody
- Note:** Anti-Trypsin Biotin Antibody has been tested by ELISA and western blot. Researchers should determine optimal titers for applications that are not stated below.

Product images:



Western Blot of Rabbit anti-Trypsin Antibody Biotin Conjugated. Lane 1: Trypsin. Load: 50 ng per lane. Primary antibody: Rabbit anti-Trypsin Antibody Biotin Conjugated at 1:1,000 overnight at 4°C. Secondary antibody: HRP streptavidin secondary antibody at 1:40,000 for 30 min at RT. Block: MB-070 for 30 minutes at RT. Predicted/Observed size: 26 kDa, 26 kDa for Trypsin. Other band(s): autocatalytic fragment of Trypsin, ~10 kDa.