

Product datasheet for **TA396916**

Rabbit Polyclonal Antibody

Product data:

Product Type:	Primary Antibodies
Applications:	ELISA
Recommended Dilution:	ELISA: 1:9,000 - 1:35,000
Host:	Rabbit
Clonality:	Polyclonal
Immunogen:	Protein G [Streptococcus species]
Specificity:	Anti-Protein G is an IgG fraction antibody purified from monospecific antiserum by a multi-step process which includes delipidation, salt fractionation and ion exchange chromatography followed by extensive dialysis against the buffer stated above. Assay by immunoelectrophoresis resulted in a single precipitin arc against anti-Biotin, anti-Rabbit Serum as well as purified and partially purified Protein G [Streptococcus species]. Cross reactivity against Protein G from other sources may occur but have not been specifically determined.
Formulation:	0.02 M Potassium Phosphate, 0.15 M Sodium Chloride, pH 7.2
Reconstitution Method:	Restore with deionized water (or equivalent) - Reconstitution Volume: 1.0 mL
Concentration:	10.0 mg/mL - lot specific
Conjugation:	Biotin
Storage:	Store vial at 4° C prior to restoration. For extended storage aliquot contents and freeze at -20° C or below. Avoid cycles of freezing and thawing. Centrifuge product if not completely clear after standing at room temperature. This product is stable for several weeks at 4° C as an undiluted liquid. Dilute only prior to immediate use.
Stability:	Expiration date is one (1) year from date of receipt.



[View online »](#)

Background:

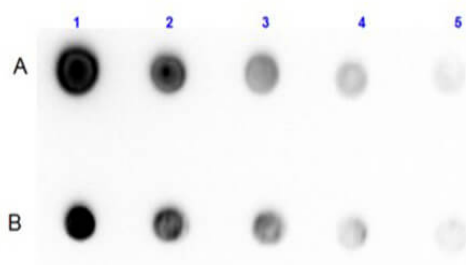
Protein G is a protein that has the property of binding to immunoglobulins. It is a 65-kDa cell surface protein that is commonly used for purifying antibodies through binding to the Fab and Fc regions. Protein G was originally isolated from Streptococcal bacteria. It is similar in properties to Protein A but has unique IgG binding specificities. Native protein G also binds albumin, however Rockland uses recombinant forms of Protein G that only bind to immunoglobulins. Biotin is widely used throughout the biotechnology industry to conjugate proteins for biochemical assays. Biotin's small size typically does not affect the biological activity of protein upon biotinylation. Biotinylated proteins of interest can be enriched from a sample due to highly stable interactions. Biotin conjugated anti-Protein G antibodies are used as an amplifying reagent in immunohistochemistry, microarray assays, ELISAs, blots, and other applications.

Synonyms:

rabbit anti-Protein G Antibody biotin Conjugation, biotin conjugated rabbit anti-Protein G Antibody, Protein G BAC

Note:

Anti-Protein G Biotin Antibody has been tested by dot blot and is suitable to be assayed against 1.0 ug of Protein G in a standard capture ELISA using Peroxidase Conjugated Streptavidin #S000-03 and ABTS (2,2'-azino-bis-[3-ethylbenthiazoline-6-sulfonic acid]) code # ABTS-100 as a substrate for 30 minutes at room temperature. A working dilution of 1:90,000 to 1:350,000 of the reconstitution concentration is suggested for this product.

Product images:


Dot Blot Results of Rabbit Anti-Protein G Antibody Biotin Conjugated. Lane A: Protein G. Lane B: Protein G reduced with TCEP. (1) 100ng, (2) 33.33ng, (3) 11.11ng, (4) 3.70ng, (5) 1.23ng. Primary Antibody: Anti-Protein G Biotin Conjugated at 1µg/mL for 1 hr at RT. Secondary Antibody: Streptavidin-HRP at 1:40,000 for 30 mins at RT. Block: BlockOut (p/n MB-073) for 30 min RT.