

Product datasheet for **TA396910S**

CPB1 Rabbit Polyclonal Antibody

Product data:

Product Type:	Primary Antibodies
Applications:	ELISA, WB
Recommended Dilution:	WB: 1:500 - 1:3,000 ELISA: 1:5,000 - 1:25,000
Reactivity:	Porcine
Host:	Rabbit
Clonality:	Polyclonal
Immunogen:	Carboxypeptidase B [Porcine Pancreas]
Specificity:	Anti-CARBOXYPEPTIDASE B (RABBIT) Antibody is an IgG fraction antibody purified from monospecific antiserum by a multi-step process which includes delipidation, salt fractionation and ion exchange chromatography followed by extensive dialysis against the buffer stated above. Assay by immunoelectrophoresis resulted in a single precipitin arc against anti-Biotin, anti-Rabbit Serum as well as purified and partially purified Carboxypeptidase B [Porcine Pancreas]. Cross reactivity against Carboxypeptidase B from other sources may occur but have not been specifically determined.
Formulation:	0.02 M Potassium Phosphate, 0.15 M Sodium Chloride, pH 7.2
Concentration:	1.0 mg/mL - lot specific
Conjugation:	Biotin
Storage:	Store vial at -20° C or below prior to opening. This vial contains a relatively low volume of reagent (25 µL). To minimize loss of volume dilute 1:10 by adding 225 µL of the buffer stated above directly to the vial. Recap, mix thoroughly and briefly centrifuge to collect the volume at the bottom of the vial. Use this intermediate dilution when calculating final dilutions as recommended below. Store the vial at -20°C or below after dilution. Avoid cycles of freezing and thawing.
Stability:	Expiration date is one (1) year from date of receipt.
Database Link:	P09955



[View online »](#)

Background:

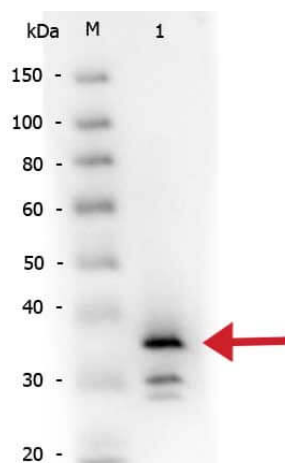
A carboxypeptidase (EC number 3.4.16 - 3.4.18) is a protease enzyme that hydrolyzes (cleaves) a peptide bond at the carboxy-terminal (C-terminal) end of a protein or peptide. (Contrast with an aminopeptidase, which cleaves peptide bonds at the other end of the protein.) Humans, animals, and plants contain several types of carboxypeptidases that have diverse functions ranging from catabolism to protein maturation. Carboxypeptidase B is a carboxypeptidase that preferentially acts upon basic amino acids, such as arginine and lysine. This serum enzyme is also responsible for rapidly metabolizing the C5a protein into C5a des-Arg, with one less amino acid.

Synonyms:

rabbit anti-Carboxypeptidase B antibody biotin conjugation, biotin conjugated rabbit anti-Carboxypeptidase B Antibody, CarboxypeptidaseB1 antibody, CP B1 antibody, CPB 1 antibody, CPB antibody, CPB1 antibody, DKFZp779K1333 antibody, Pancreas specific protein antibody, Pancreatic carboxypeptidase B1 antibody

Note:

Anti-CARBOXYPEPTIDASE B Biotin Antibody has been tested by Western Blot and is suitable to be assayed against 1.0 ug of Carboxypeptidase B in a standard capture ELISA using Peroxidase Conjugated Streptavidin #S000-03 and ABTS (2,2'-azino-bis-[3-ethylbenthiazoline-6-sulfonic acid]) code # ABTS-100 as a substrate for 30 minutes at room temperature. A working dilution of 1:4,000 to 1:20,000 of the reconstitution concentration is suggested for this product.

Product images:

Western Blot of Rabbit anti-Carboxypeptidase B antibody Biotin conjugated. Lane 1: Carboxypeptidase B. Load: 50 ng per lane. Primary antibody: Rabbit anti-Carboxypeptidase B antibody Biotin conjugated at 1:1,000 overnight at 4°C. Secondary antibody: HRP conjugated rabbit secondary antibody at 1:40,000 for 30 min at RT. Block: Blocking buffer for Fluorescent Western Blotting (MB-070) at RT for 30 min. Predicted/Observed size: ~35 kDa