

Product datasheet for **TA396901S**

CPB1 Rabbit Polyclonal Antibody

Product data:

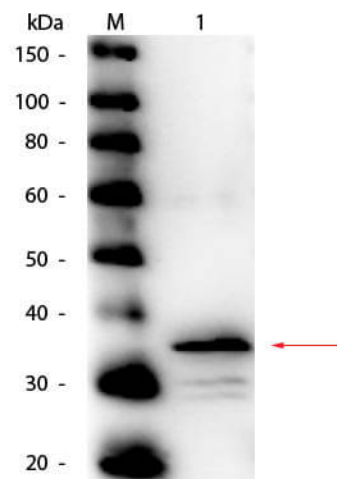
Product Type:	Primary Antibodies
Applications:	ELISA, WB
Recommended Dilution:	WB: 1:250 - 1:1,000 ELISA: 1:1,000 - 1:5,000
Reactivity:	Porcine
Host:	Rabbit
Clonality:	Polyclonal
Immunogen:	Carboxypeptidase B [Porcine Pancreas]
Specificity:	Anti-Carboxypeptidase B Antibody is an IgG fraction antibody purified from monospecific antiserum by a multi-step process which includes delipidation, salt fractionation and ion exchange chromatography followed by extensive dialysis against the buffer stated above. Assay by immunoelectrophoresis resulted in a single precipitin arc against anti-Peroxidase, anti-Rabbit Serum as well as purified and partially purified Carboxypeptidase B [Porcine Pancreas]. Cross reactivity against Carboxypeptidase B from other tissues and species is unknown.
Formulation:	0.02 M Potassium Phosphate, 0.15 M Sodium Chloride, pH 7.2
Concentration:	1.0 mg/mL - lot specific
Conjugation:	HRP
Storage:	Store vial at -20° C or below prior to opening. This vial contains a relatively low volume of reagent (25 µL). To minimize loss of volume dilute 1:10 by adding 225 µL of the buffer stated above directly to the vial. Recap, mix thoroughly and briefly centrifuge to collect the volume at the bottom of the vial. Use this intermediate dilution when calculating final dilutions as recommended below. Store the vial at -20°C or below after dilution. Avoid cycles of freezing and thawing.
Stability:	Expiration date is one (1) year from date of receipt.
Database Link:	P09955



[View online »](#)

- Background:** Anti-Carboxypeptidase B Antibody is a key enzyme in the hydrolysis in basic amino acids in the C-terminal position of polypeptides. First isolated from the porcine pancreas, Carboxypeptidase B is activated by trypsin and exhibits high specificity for lysine and arginine. Carboxypeptidase B is also a key enzyme in insulin product in humans and can be used as a marker for pancreatic diagnosis. Anti-Carboxypeptidase B is ideal for investigators in Cell Biology, Immunology, and Microbiology.
- Synonyms:** rabbit anti-Carboxypeptidase B antibody HRP conjugation, peroxidase conjugated rabbit anti-Carboxypeptidase B Antibody, CarboxypeptidaseB1 antibody, CP B1 antibody, CPB 1 antibody, CPB antibody, CPB1 antibody, DKFZp779K1333 antibody, Pancreas specific protein antibody, Pancreatic carboxypeptidase B1 antibody
- Note:** Anti-Carboxypeptidase B peroxidase Antibody has been tested in western blot and suitable to be assayed against 1.0 ug of Carboxypeptidase B [Porcine Pancreas] in a standard capture ELISA using ABTS (2,2'-azino-bis-[3-ethylbenthiazoline-6-sulfonic acid]) code # ABTS-100 as a substrate for 30 minutes at room temperature. A working dilution of 1:1,000 to 1:3,000 of the reconstitution concentration is suggested for Anti-Carboxypeptidase B Antibody.

Product images:



Western Blot of Rabbit anti-Carboxypeptidase B Antibody Peroxidase Conjugated. Lane 1: Carboxypeptidase B. Load: 50 ng per lane. Primary antibody: Rabbit anti-Carboxypeptidase B Antibody Peroxidase Conjugated at 1:1,000 overnight at 4°C. Secondary antibody: n/a. Block: MB-070 for 30 minutes at RT. Predicted/Observed size: 47 kDa, observed at 35 kDa for Carboxypeptidase B. Expected molecular weight for processed protein is ~34.7 kDa.