

## Product datasheet for **TA396900S**

### Rabbit Polyclonal Antibody

#### Product data:

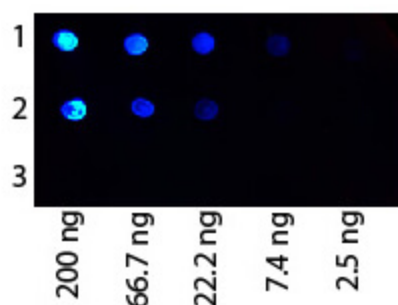
Product Type:	Primary Antibodies
Applications:	FC, IF, WB
Recommended Dilution:	<b>WB:</b> User Optimized <b>IF:</b> 1:50 - 1:250 <b>FC:</b> User Optimized <b>FLISA:</b> User Optimized
Reactivity:	Human, Rat
Host:	Rabbit
Clonality:	Polyclonal
Immunogen:	Protein G (Streptococcus species)
Specificity:	Anti-Protein G antibody is an IgG fraction antibody purified from monospecific antiserum by a multi-step process which includes delipidation, salt fractionation and ion exchange chromatography followed by extensive dialysis against the buffer stated above. Assay by immunoelectrophoresis resulted in a single precipitin arc against anti-fluorescein, anti-Rabbit Serum and Protein G.
Formulation:	0.02 M Potassium Phosphate, 0.15 M Sodium Chloride, pH 7.2
Concentration:	1.0 mg/mL - lot specific
Conjugation:	FITC
Storage:	Store vial at -20° C or below prior to opening. This vial contains a relatively low volume of reagent (25 µL). To minimize loss of volume dilute 1:10 by adding 225 µL of the buffer stated above directly to the vial. Recap, mix thoroughly and briefly centrifuge to collect the volume at the bottom of the vial. Use this intermediate dilution when calculating final dilutions as recommended below. Store the vial at -20°C or below after dilution. Avoid cycles of freezing and thawing.
Stability:	Expiration date is one (1) year from date of receipt.



[View online »](#)

- Background:** Protein G is a protein that has the property of binding to immunoglobulins. It is a 65-kDa cell surface protein that is commonly used for purifying antibodies through binding to the Fab and Fc regions. Protein G was originally isolated from Streptococcal bacteria. It is similar in properties to Protein A but has unique IgG binding specificities. Native protein G also binds albumin, however Rockland uses recombinant forms of Protein G that only bind to immunoglobulins.
- Synonyms:** rabbit anti-Protein G Antibody FITC Conjugation, Fluorescein conjugated rabbit anti-Protein G Antibody, Protein G FITC
- Note:** FITC Conjugated Anti-Protein G antibody has been tested by dot blot and is designed for immunofluorescence microscopy, fluorescence based plate assays (FLISA) and fluorescent western blotting. This product is also suitable for multiplex analysis, including multicolor imaging, utilizing various commercial platforms.

### Product images:



Dot Blot of Protein G Antibody Fluorescein Conjugated. Antigen 1: Human IgG. Antigen 2: Rat IgG. Antigen 3: Dog IgG. Load: Starting dot is 200 ng followed by a 3-fold serial dilution. Primary antibody: Protein G at 1:1000 for 60 min RT. Secondary antibody: Fluorescein rabbit anti-Protein G at 1:1,000 for 30 min at RT. Block: MB-070 for 30 min at RT.