

Product datasheet for **TA396896**

AGAP8 (AGAP4) Rabbit Polyclonal Antibody

Product data:

Product Type:	Primary Antibodies
Applications:	ELISA, WB
Recommended Dilution:	WB: 1:1000 ELISA: 1:10,000-1:20,000
Reactivity:	Human
Host:	Rabbit
Clonality:	Polyclonal
Immunogen:	Anti-AGAP4 antibody was prepared from whole rabbit serum produced by repeated immunizations with recombinant His-tagged AGAP4 protein.
Specificity:	Anti-AGAP4 antibody was purified from monospecific antiserum by protein A affinity purification and the His-tag was removed by cross adsorption. An immunoblot assay detects overexpressed recombinant AGAP4.
Formulation:	0.02 M Potassium Phosphate, 0.15 M Sodium Chloride, pH 7.2
Concentration:	1.04mg/ml - lot specific
Conjugation:	Unconjugated
Storage:	Store antibody at -20° C prior to opening. Aliquot contents and freeze at -20° C or below for extended storage. Avoid cycles of freezing and thawing. Centrifuge product if not completely clear after standing at room temperature. This product is stable for several weeks at 4° C as an undiluted liquid. Dilute only prior to immediate use.
Stability:	Expiration date is one (1) year from date of receipt.
Gene Name:	ArfGAP with GTPase domain, ankyrin repeat and PH domain 4
Database Link:	Entrez Gene 119016 Human Q96P64



[View online »](#)

Background:

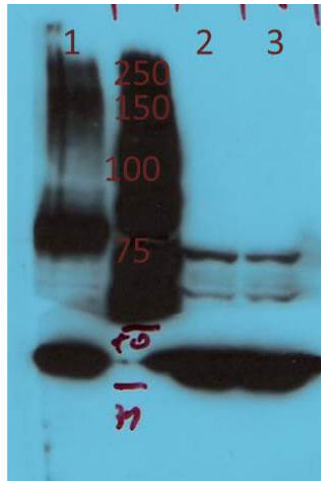
This antibody is designed, produced, and validated as part of a collaboration between Rockland and the National Cancer Institute (NCI). The AGAPs are the largest subgroup of the ArfGAP family with 11 genes in humans. AGAP4 (also known as Arf-GAP with GTPase, ANK repeat and PH domain-containing protein 4) is a GTPase activating protein. It is overexpressed in cancer cells, prevents apoptosis and promotes cancer cell invasion. AGAP4 and other AGAP proteins likely function in the secretory pathway, which could explain a link with the invasive behavior of cancer cells. Reliable antibodies would be invaluable for studies of the physiologic function of the proteins and how it may be linked to cancer cell invasive behavior. Anti-AGAP4 Antibody is useful for researchers interested in Developmental Biology, apoptosis, Cancer, Immunology, and Nuclear Signaling research.

Synonyms:

rabbit anti-AGAP4 antibody, AGAP-4, AGAP 4, CTGLF1, MRIP2, Arf-GAP with GTPase, ANK repeat and PH domain-containing protein 4, Centaurin-gamma-like family member 1

Note:

Anti-AGAP4 antibody has been tested for use in western blot. Specific conditions for reactivity should be optimized by the end user. Expect a band approximately 73kDa in size corresponding to AGAP4 by western blotting in the appropriate cell lysate or extract.

Product images:

Western Blot of Rabbit Anti-AGAP4 Antibody. Lane 1: HeLa cells treated with HA/AGAP4. Lane 2: HeLa cells control. Lane 3: HeLa cells treated with AGAP4/siRNA. Load: 10 µg per lane. Primary antibody: AGAP4 antibody at 1:1000 for overnight at 4°C. Secondary antibody: IRDye800™ rabbit secondary antibody at 1:10,000 for 45 min at RT. Block: 5% BLOTTO overnight at 4°C. Predicted/Observed size: 71 kDa, 71 kDa for AGAP4. Other band(s): 42kDa Actin loading control.