

Product datasheet for **TA396894S**

Setdb2 Rabbit Polyclonal Antibody

Product data:

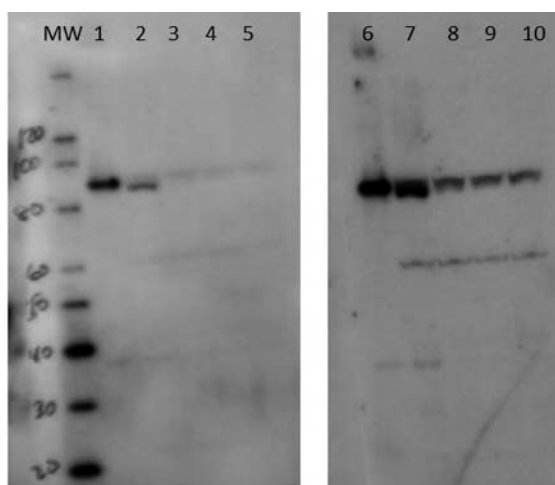
Product Type:	Primary Antibodies
Applications:	ELISA, WB
Recommended Dilution:	WB: 1:10,000 - 1:100,000 ELISA: 1:2,500 - 1:10,000
Reactivity:	Human, Mouse
Host:	Rabbit
Clonality:	Polyclonal
Immunogen:	Setdb2 antibody was prepared from whole rabbit serum produced by repeated immunizations with a full length protein corresponding to mouse Setdb2.
Specificity:	This Protein A purified antibody is directed against mouse Setdb2. The product was purified from monospecific antiserum by Protein A affinity chromatography. Expect reactivity with Setdb2 from mouse and human sources. Reactivity against homologues from other sources is not known.
Formulation:	0.02 M Potassium Phosphate, 0.15 M Sodium Chloride, pH 7.2
Concentration:	0.98 mg/mL - lot specific
Conjugation:	Unconjugated
Storage:	Store vial at -20° C or below prior to opening. This vial contains a relatively low volume of reagent (25 µL). To minimize loss of volume dilute 1:10 by adding 225 µL of the buffer stated above directly to the vial. Recap, mix thoroughly and briefly centrifuge to collect the volume at the bottom of the vial. Use this intermediate dilution when calculating final dilutions as recommended below. Store the vial at -20°C or below after dilution. Avoid cycles of freezing and thawing.
Stability:	Expiration date is one (1) year from date of receipt.



[View online »](#)

- Background:** Setdb2 is designed, produced, and validated as part of a collaboration between Rockland and the National Cancer Institute (NCI). Setdb2 and the neighboring gene Phf11 were linked to familial atopy/ asthma and are in a "critical region" commonly deleted in CLL. Setdb2 is a candidate histone methyltransferase as a member of the Su(var) 3-9 family of SET domain-containing enzymes. Other predicted domains in Setdb2 include a methylcytosine binding domain and a large bifurcation domain interrupting the putative histone methyltransferase (SET) domain whose function is unknown. Anti-Setdb2 antibody is ideal for researchers interested in Cancer Research and Epigenetics Research.
- Synonyms:** rabbit anti-Setdb2 Antibody, Histone-lysine N-methyltransferase SETDB2, SET domain bifurcated 2, Setdb 2 antibody, Gm293
- Note:** Anti-Setdb2 antibody has been tested for use in ELISA and western blotting. Specific conditions for reactivity should be optimized by the end user. Expect a band approximately 80.6 kDa in size corresponding to Setdb2 by western blotting in the appropriate cell lysate or extract.

Product images:



Western Blot of Rabbit anti-Setdb2 antibody. Lane 1: 50ng recombinant mouse Setdb2. Lane 2: 50ng recombinant mouse Setdb2 + HEK293 50mcg. Lane 3: 5.0ng recombinant mouse Setdb2 + HEK293 50mcg. Lane 4: 0.5ng recombinant mouse Setdb2 + HEK293 50mcg. Lane 5: HEK293 50mcg. Lane 6: 50ng recombinant mouse Setdb2. Lane 7: 50ng recombinant mouse Setdb2 + HEK293 50mcg. Lane 8: 5.0ng recombinant mouse Setdb2 + HEK293 50mcg. Lane 9: 0.5ng recombinant mouse Setdb2 + HEK293 50mcg. Lane 10: HEK293 50mcg. Primary antibody: Setdb2 antibody at 1:100,000 (lanes 1-5) and 1:25,000 (lanes 6-10) for overnight at 4°C. Secondary antibody: HRP rabbit secondary antibody at 1:20,000 for 45 min at RT. Block: 5% BLOTTO overnight at 4°C. Predicted/Observed size: 80.6 kDa for Setdb2. Other band(s): degradation products, proteolysis products, or nonspecific binding.