

Product datasheet for **TA396892**

Rabbit Polyclonal Antibody

Product data:

Product Type:	Primary Antibodies
Applications:	ELISA, WB
Recommended Dilution:	WB: 1:500-1:1000 ELISA: 1:1000-1:2000
Reactivity:	Escherichia coli
Host:	Rabbit
Clonality:	Polyclonal
Immunogen:	Anti-Host Cell Proteins Antibody was prepared by repeated immunizations with a full range of high molecular weight (HMW) and low molecular weight (LMW) proteins from E.Coli (BL21).
Specificity:	Host Cell Protein A purified antibody is directed against high molecular weight and low molecular weight E.coli Host Cell Proteins. The product was purified from monospecific antiserum by Protein A affinity chromatography. Reactivity is directed against E.coli Host Cell Proteins. Cross-reactivity with other species is likely but has not been determined. Reactivity against homologues from other sources is not known.
Formulation:	0.02 M Potassium Phosphate, 0.15 M Sodium Chloride, pH 7.2
Concentration:	1.02mg/mL - lot specific
Conjugation:	Unconjugated
Storage:	Store vial at -20° C or below prior to opening. This vial contains a relatively low volume of reagent (25 µL). To minimize loss of volume dilute 1:10 by adding 225 µL of the buffer stated above directly to the vial. Recap, mix thoroughly and briefly centrifuge to collect the volume at the bottom of the vial. Use this intermediate dilution when calculating final dilutions as recommended below. Store the vial at -20°C or below after dilution. Avoid cycles of freezing and thawing.
Stability:	Expiration date is one (1) year from date of receipt.



[View online »](#)

Background:

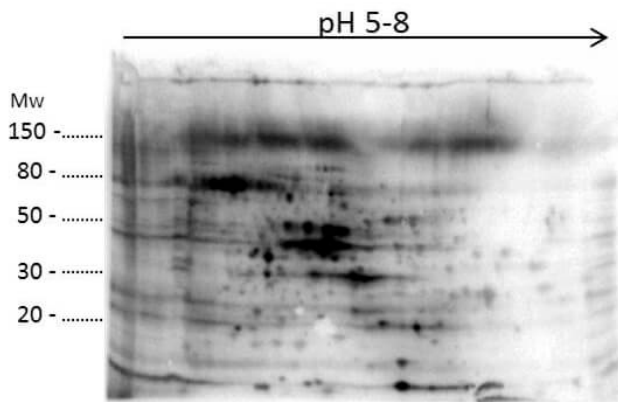
Anti-Host Cell Proteins Antibody recognizes high and low molecular weight protein fractions from E.coli. This antibody has been validated by 2D electrophoresis western blot to assure highest possible coverage of E.coli HCP. Host Cell Proteins are process-related impurities derived from a host cell expression system that may be present in trace amounts in a final drug substance. HCP Antibodies are used to detect impurities in biologically-based therapeutics. Detecting impurities often unseen by 1-D electrophoresis, a 2D electrophoresis western blot analysis delivers more complete insight into the immunocoverage of protein components of the host cell lysate.

Synonyms:

rabbit anti-Host Cell Protein antibody, rabbit anti-HCP antibody, rabbit anti-E.Coli HCP antibody

Note:

Anti-Host Cell Proteins Antibody detects over 300 E.coli proteins and has been tested by 2D-Page, western blotting, and ELISA.

Product images:

2D Western Blot of anti-E.coli Host Cell Protein antibody. Load: 35 μ g Total HCP. Primary antibody: Rabbit anti-HCP antibody at 1:200 for overnight at 4°C. Secondary antibody: Goat anti-rabbit secondary antibody at 1:10,000 for 30 min at RT. Block: MB-070 for 1 hour at RT.