

## Product datasheet for **TA396891S**

### Rabbit Polyclonal Antibody

#### Product data:

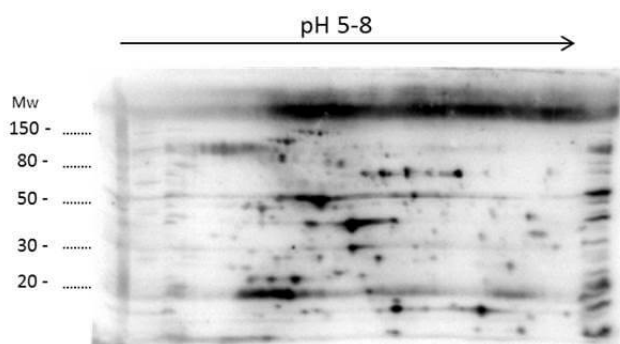
Product Type:	Primary Antibodies
Applications:	ELISA, WB
Recommended Dilution:	<b>WB:</b> 1:500-1:1000 <b>ELISA:</b> 1:1000 - 1:2000
Reactivity:	Escherichia coli
Host:	Rabbit
Clonality:	Polyclonal
Immunogen:	Anti-LMW E.Coli Host Cell Proteins Antibody was prepared by repeated immunizations with a mixture low molecular weight (LMW) proteins from E.Coli (BL21).
Specificity:	LMW Host Cell Protein A purified antibody is directed against low molecular weight E.coli Host Cell Proteins. The product was purified from monospecific antiserum by Protein A affinity chromatography.
Formulation:	0.02 M Potassium Phosphate, 0.15 M Sodium Chloride, pH 7.2
Concentration:	1.29 mg/mL - lot specific
Conjugation:	Unconjugated
Storage:	Store vial at -20° C or below prior to opening. This vial contains a relatively low volume of reagent (25 µL). To minimize loss of volume dilute 1:10 by adding 225 µL of the buffer stated above directly to the vial. Recap, mix thoroughly and briefly centrifuge to collect the volume at the bottom of the vial. Use this intermediate dilution when calculating final dilutions as recommended below. Store the vial at -20°C or below after dilution. Avoid cycles of freezing and thawing.
Stability:	Expiration date is one (1) year from date of receipt.



[View online »](#)

- Background:** Anti-LMW Host Cell Proteins Antibody recognizes low molecular weight protein fractions from E.coli. This antibody has been analyzed by 2D electrophoresis western blot to assure highest possible coverage of E.coli HCP. Host Cell Proteins are process-related impurities derived from a host cell expression system that may be present in trace amounts in a final drug substance. HCP Antibodies are used to detect impurities in biologically-based therapeutics. Detecting impurities often unseen by 1-D electrophoresis, a 2D electrophoresis western blot analysis delivers more complete insight into the immunocoverage of protein components of the host cell lysate.
- Synonyms:** rabbit anti-E.Coli Host Cell Protein antibody, rabbit anti-HCP antibody, rabbit anti-Low molecular Weight E.Coli Host Cell Proteins Antibody, Anti-Host Cell Protein, Low molecular weight E.Coli HCP proteins antibody
- Note:** Anti-LMW Host Cell Proteins Antibody detects over 270 E.coli LMW proteins and has been tested by 2D-Page, western blotting, and ELISA.

### Product images:



2D Western Blot of anti-E.coli Low Molecular Weight Host Cell Protein antibody. Load: 35  $\mu$ g LMW HCP. Primary antibody: Rabbit anti-LMW-HCP antibody at 1:200 for overnight at 4°C. Secondary antibody: Goat anti-rabbit secondary antibody at 1:10,000 for 30 min at RT. Block: MB-070 for 1 hour at RT.