

Product datasheet for **TA396877**

ospC Rabbit Polyclonal Antibody

Product data:

Product Type:	Primary Antibodies
Applications:	ELISA, WB
Recommended Dilution:	WB: 1:1,000 ELISA: 1:1,000
Reactivity:	Borrelia burgdorferi
Host:	Rabbit
Clonality:	Polyclonal
Immunogen:	MBP-fusion protein corresponding to Borrelia burgdorferi OspC protein.
Specificity:	This product was Protein-A purified and cross-adsorbed against MBP from monospecific antiserum by chromatography. This antibody is specific for Borrelia burgdorferi OspC protein. A BLAST analysis was used to suggest cross-reactivity with p39 from B. burgdorferi, afzelii, and valaisiana sources based on 100% homology with the immunizing sequence. Partial reactivity is expected against B. japonica and americana sources based on 94% homology. Cross-reactivity with OspC from other sources has not been determined.
Formulation:	0.02 M Potassium Phosphate, 0.15 M Sodium Chloride, pH 7.2
Reconstitution Method:	Restore with deionized water (or equivalent) - Reconstitution Volume: 100 µL
Concentration:	1.2 mg/mL - lot specific
Conjugation:	Unconjugated
Storage:	Store vial at -20° C or below prior to opening. This vial contains a relatively low volume of reagent (25 µL). To minimize loss of volume dilute 1:10 by adding 225 µL of the buffer stated above directly to the vial. Recap, mix thoroughly and briefly centrifuge to collect the volume at the bottom of the vial. Use this intermediate dilution when calculating final dilutions as recommended below. Store the vial at -20°C or below after dilution. Avoid cycles of freezing and thawing.
Stability:	Expiration date is three (3) months from date of receipt.
Database Link:	Q07337
Background:	Outer Surface Protein C, or OspC, is a 20.7 kDa immunogenic protein on the outer surface of the spirochete Borrelia burgdorferi. Its function is not known, but it is located with lipid-anchoring sites on the outer cell membrane.

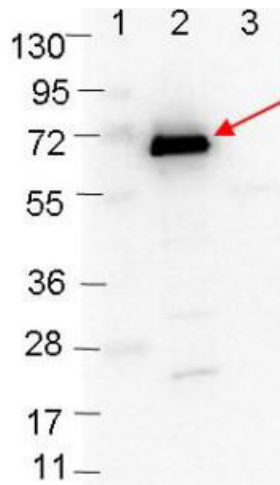


[View online »](#)

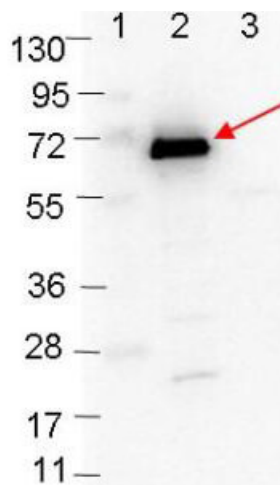
Synonyms: rabbit anti-OspC Antibody, Borrelia burgdorferi OspC, PC, Outer Surface Protein C, BB_B19

Note: This protein-A purified antibody has been tested for use in Western blotting and ELISA. Specific conditions for reactivity should be optimized by the user. Expect a band approximately 20.7 kDa in size corresponding to Borrelia burgdorferi OspC protein by Western blotting in the appropriate cell lysate or extract.

Product images:



Western blot showing detection of 0.1 μ g of recombinant OspC protein. Lane 1: Molecular weight markers. Lane 2: MBP-OspC fusion protein (arrow; expected MW: 63.1 kDa). Lane 3: MBP alone. Protein was run on a 4-20% gel, then transferred to 0.45 μ m nitrocellulose. After blocking with 1% BSA-TTBS (p/n MB-013, diluted to 1X) overnight at 4°C, primary antibody was used at 1:1000 at room temperature for 30 min. HRP-conjugated Goat-Anti-Rabbit (p/n 611-103-122) secondary antibody was used at 1:40,000 in MB-070 blocking buffer and imaged on the VersaDoc™ MP 4000 imaging system (Bio-Rad).



Western blot showing detection of 0.1 μ g of recombinant OspC protein. Lane 1: Molecular weight markers. Lane 2: MBP-OspC fusion protein (arrow; expected MW: 63.1 kDa). Lane 3: MBP alone. Protein was run on a 4-20% gel, then transferred to 0.45 μ m nitrocellulose. After blocking with 1% BSA-TTBS (p/n MB-013, diluted to 1X) overnight at 4°C, primary antibody was used at 1:1000 at room temperature for 30 min. HRP-conjugated Goat-Anti-Rabbit (p/n 611-103-122) secondary antibody was used at 1:40,000 in MB-070 blocking buffer and imaged on the VersaDoc™ MP 4000 imaging system (Bio-Rad).