

Product datasheet for **TA396870S**

ADA Rabbit Polyclonal Antibody

Product data:

Product Type:	Primary Antibodies
Applications:	ELISA, IP, WB
Recommended Dilution:	WB: 1:500 - 1:5,000 ELISA: 1:5,000 - 1:20,000
Host:	Rabbit
Clonality:	Polyclonal
Immunogen:	Adenosine Deaminase [Calf Spleen]
Specificity:	Anti-Adenosine Deaminase antibody is an IgG fraction antibody purified from monospecific antiserum by a multi-step process which includes delipidation, salt fractionation and ion exchange chromatography followed by extensive dialysis against the buffer stated above. Assay by immunoelectrophoresis resulted in a single precipitin arc against anti-Rabbit Serum as well as purified and partially purified Adenosine Deaminase [Calf Spleen]. Cross reactivity against Adenosine Deaminase from other tissues and species may occur but have not been specifically determined.
Formulation:	0.02 M Potassium Phosphate, 0.15 M Sodium Chloride, pH 7.2
Concentration:	1.0 mg/ml - lot specific
Conjugation:	Unconjugated
Storage:	Store vial at -20° C or below prior to opening. This vial contains a relatively low volume of reagent (25 µL). To minimize loss of volume dilute 1:10 by adding 225 µL of the buffer stated above directly to the vial. Recap, mix thoroughly and briefly centrifuge to collect the volume at the bottom of the vial. Use this intermediate dilution when calculating final dilutions as recommended below. Store the vial at -20°C or below after dilution. Avoid cycles of freezing and thawing.
Stability:	Expiration date is one (1) year from date of receipt.
Database Link:	P56658

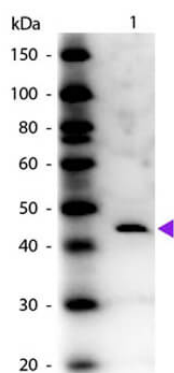
[View online »](#)

Background: Adenosine deaminase antibody is an enzyme involved in purine metabolism. It is needed for the breakdown of adenosine from food and for the turnover of nucleic acids in tissues. Present in virtually all mammalian cells, its primary function in humans is the development and maintenance of the immune system. However, the full physiological role of ADA is not yet completely understood. Anti-ADENOSINE DEAMINASE antibody is ideal for investigators involved in enzyme and infectious disease research.

Synonyms: rabbit anti-Adenosine Deaminase Antibody, Adenosine deaminase, Adenosine aminohydrolase

Note: Anti-Adenosine Deaminase antibody has been tested in western blot and is suitable for ELISA and Immunoprecipitation applications. Anti-ADENOSINE DEAMINASE antibody was tested against 1.0 ug of Adenosine Deaminase [Calf Spleen] by immunoblot using Peroxidase conjugated Affinity Purified anti-Rabbit IgG [H&L] (Goat) and DAB as a substrate at room temperature. A working dilution of 1:8,000 to 1:40,000 is suggested for this product.

Product images:



Western blot of Rabbit Anti-Adenosine Deaminase (Calf Spleen) antibody. Lane 1: Adenosine Deaminase. Load: 50ng. Primary antibody: Adenosine Deaminase antibody at 1:1,000 for overnight at 4°C. Secondary antibody: Peroxidase rabbit secondary antibody (p/n 611-103-122) at 1:40,000 for 30 min at RT. Blocking: MB-070 for 30 min at RT. Predicted/Observed size: 44 kDa for Adenosine Deaminase. Other band(s): None.