

## Product datasheet for **TA396864**

### PRC1 Rabbit Polyclonal Antibody

#### Product data:

Product Type:	Primary Antibodies
Applications:	ELISA, WB
Recommended Dilution:	<b>WB:</b> 1:5,000 <b>ELISA:</b> 10,000 - 1:42,000
Host:	Rabbit
Clonality:	Polyclonal
Immunogen:	Carboxypeptidase Y [Baker's Yeast]
Specificity:	Anti-Carboxypeptidase Y is an IgG fraction antibody purified from monospecific antiserum by a multi-step process which includes delipidation, salt fractionation and ion exchange chromatography followed by extensive dialysis against the buffer stated above. Assay by immunoelectrophoresis resulted in a single precipitin arc against anti-Rabbit Serum as well as purified and partially purified Carboxypeptidase Y [Baker's Yeast]. Cross reactivity against Carboxypeptidase Y from other tissues and species may occur but have not been specifically determined.
Formulation:	0.02 M Potassium Phosphate, 0.15 M Sodium Chloride, pH 7.2
Reconstitution Method:	Restore with deionized water (or equivalent) - Reconstitution Volume: 100 µL
Concentration:	1.0 mg/ml - lot specific
Conjugation:	Unconjugated
Storage:	Store vial at 4° C prior to restoration. For extended storage aliquot contents and freeze at -20° C or below. Avoid cycles of freezing and thawing. Centrifuge product if not completely clear after standing at room temperature. This product is stable for several weeks at 4° C as an undiluted liquid. Dilute only prior to immediate use.
Stability:	Expiration date is one (1) year from date of receipt.
Database Link:	<a href="#">P00729</a>
Background:	Carboxypeptidase Y is involved in degradation of small peptides. It digests preferentially peptides containing an aliphatic or hydrophobic residue in P1' position, as well as methionine, leucine or phenylalanine in P1 position of ester substrate. Carboxypeptidase that catalyzes the release of a C-terminal amino acid with broad specificity. It is inhibited by ZPCK.

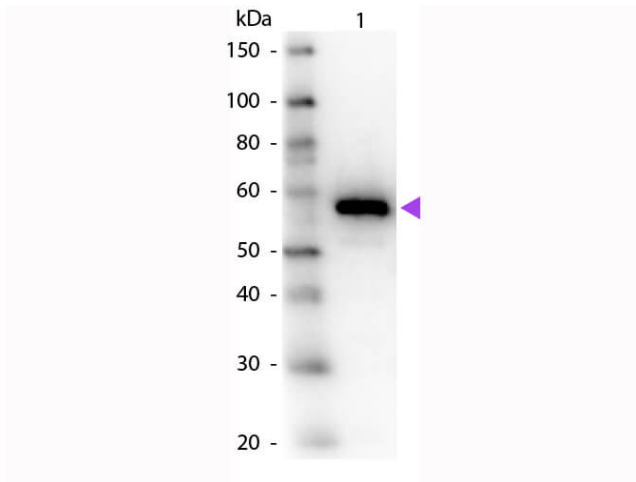


[View online »](#)

**Synonyms:** rabbit anti-Carboxypeptidase Y antibody, Carboxypeptidase YSCY antibody, CPY1 antibody, LBC1 antibody, PRC1 antibody, Vacuolar carboxypeptidase Y antibody, YMR297W antibody, Carboxypeptidase C

**Note:** Carboxypeptidase Y Antibody has been tested by ELISA and western blot and is assayed against 1.0 µg of Carboxypeptidase Y [Baker's Yeast] in a standard ELISA using Peroxidase conjugated Affinity Purified anti-Rabbit IgG [H&L] (Goat) code #611-1302 and ABTS (2,2'-azino-bis-[3-ethylbenthiazoline-6-sulfonic acid]) code # ABTS-100 as a substrate for 30 minutes at room temperature. A working dilution of 1:10,000 to 1:42,000 is suggested for this product.

### Product images:



Western Blot of Rabbit anti-Carboxypeptidase Y Antibody. Lane 1: Carboxypeptidase Y. Load: 50 ng per lane. Primary antibody: Carboxypeptidase Y primary antibody at 1:1,000 overnight at 4°C. Secondary antibody: Peroxidase rabbit secondary antibody at 1:40,000 for 30 min at RT. Block: MB-070 for 30 min at RT. Predicted/Observed size: 53 kDa, 57 kDa for Carboxypeptidase Y. Other band(s): None.