

Product datasheet for **TA396863S**

cpeA Rabbit Polyclonal Antibody

Product data:

Product Type:	Primary Antibodies
Applications:	ELISA, IHC, WB
Recommended Dilution:	WB: 1:2,000 – 1:10,000 IHC: 1:1,000 – 1:5,000 ELISA: 1:20,000 – 1:100,000
Host:	Rabbit
Clonality:	Polyclonal
Immunogen:	Phycoerythrin [Porphyridium creuentum]
Specificity:	Anti-B-Phycoerythrin Antibody is an IgG fraction antibody purified from monospecific antiserum by a multi-step process which includes delipidation, salt fractionation and ion exchange chromatography followed by extensive dialysis against the buffer stated above. Assay by immunoelectrophoresis resulted in a single precipitin arc against anti-Rabbit Serum as well as purified and partially purified Phycoerythrin [Porphyridium creuentum].
Formulation:	0.02 M Potassium Phosphate, 0.15 M Sodium Chloride, pH 7.2
Concentration:	1.0 mg/ml – lot specific
Conjugation:	Unconjugated
Storage:	Store vial at -20° C or below prior to opening. This vial contains a relatively low volume of reagent (25 µL). To minimize loss of volume dilute 1:10 by adding 225 µL of the buffer stated above directly to the vial. Recap, mix thoroughly and briefly centrifuge to collect the volume at the bottom of the vial. Use this intermediate dilution when calculating final dilutions as recommended below. Store the vial at -20°C or below after dilution. Avoid cycles of freezing and thawing.
Stability:	Expiration date is three (3) months from date of receipt.
Database Link:	<u>P11392</u>



Background:

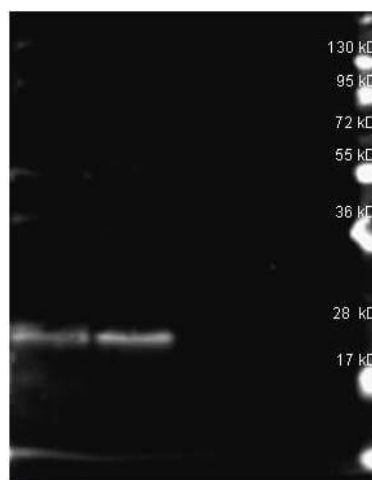
Anti-B-Phycoerythrin Antibody detects the B-PE phycoerythrin protein. Phycoerythrin is a red protein from the light-harvesting phycobiliprotein family, present in cyanobacteria, and red algae. Phycoerythrin is organized in a hexameric structure of alpha and beta chains, covalently binding chromophores called phycobilins. R-Phycoerythrin and B-Phycoerythrin are among the brightest biological fluorescent dyes and are commonly used as a fluorescent dye in many assays and is frequently conjugated to antibodies as a reporter molecule. The spectral properties of B-Phycoerythrin are absorption at 545 nm and emission at 572 nm.

Synonyms:

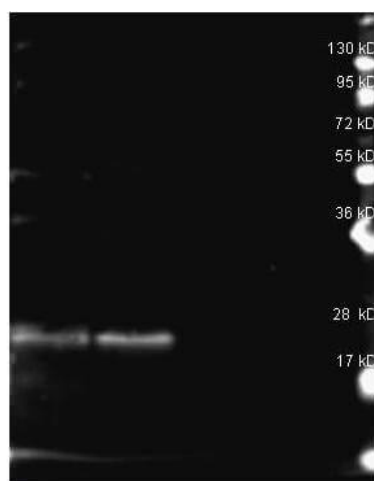
rabbit anti-B-Phycoerythrin Antibody, rabbit anti B-Phycoerythrin, rabbit anti Phycoerythrin

Note:

Anti-B-Phycoerythrin antibody has been tested by ELISA and dot blot and is suitable for western blot and immunohistochemistry, as well as other assays requiring lot-to-lot consistency.

Product images:


Rockland Rabbit anti B-Phycoerythrin antibody (200-4199 lot 25411) was used to detect B-Phycoerythrin under reducing (R) conditions. Reduced samples of purified Phycoerythrin contained 4% BME and were boiled for 5 minutes. Samples of ~1ug of protein per lane were run by SDS-PAGE. Protein was transferred to nitrocellulose and probed with 1:1000 dilution of anti B-Phycoerythrin antibody (200-4199 lot 25411 ON 4 C) and detection was using Dylight 649 conjugated Donkey anti rabbit (611-743-127 lot 20831 1:10K 1.5 hr RT in MB-070) and imaged on the BioRad VersaDoc System.



Rockland Rabbit anti B-Phycoerythrin antibody (200-4199 lot 25411) was used to detect B-Phycoerythrin under reducing (R) conditions. Reduced samples of purified Phycoerythrin contained 4% BME and were boiled for 5 minutes. Samples of ~1 μ g of protein per lane were run by SDS-PAGE. Protein was transferred to nitrocellulose and probed with 1:1000 dilution of anti B-Phycoerythrin antibody (200-4199 lot 25411 ON 4 C) and detection was using Dylight 649 conjugated Donkey anti rabbit (611-743-127 lot 20831 1:10K 1.5 hr RT in MB-070) and imaged on the BioRad VersaDoc System.