

## Product datasheet for **TA396860**

### DEX Rabbit Polyclonal Antibody

#### Product data:

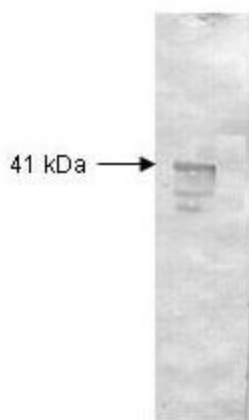
Product Type:	Primary Antibodies
Applications:	ELISA, IP, WB
Recommended Dilution:	<b>WB:</b> 1:500 - 1:5,000 <b>ELISA:</b> 1:5,000 - 1:20,000
Reactivity:	Penicillium
Host:	Rabbit
Clonality:	Polyclonal
Immunogen:	Dextranase [Penicillium species]
Specificity:	Anti-DEXTRANASE is an IgG fraction antibody purified from monospecific antiserum by a multi-step process which includes delipidation, salt fractionation and ion exchange chromatography followed by extensive dialysis against the buffer stated above. Assay by immunoelectrophoresis resulted in a single precipitin arc against anti-Rabbit Serum as well as purified and partially purified Dextranase [Penicillium species]. Cross reactivity against Dextranase from other tissues and species may occur but have not been specifically determined.
Formulation:	0.02 M Potassium Phosphate, 0.15 M Sodium Chloride, pH 7.2
Reconstitution Method:	Restore with deionized water (or equivalent) - Reconstitution Volume: 100 µL
Concentration:	1.0 mg/ml - lot specific
Conjugation:	Unconjugated
Storage:	Store vial at 4° C prior to restoration. For extended storage aliquot contents and freeze at -20° C or below. Avoid cycles of freezing and thawing. Centrifuge product if not completely clear after standing at room temperature. This product is stable for several weeks at 4° C as an undiluted liquid. Dilute only prior to immediate use.
Stability:	Expiration date is one (1) year from date of receipt.
Database Link:	<a href="#">P48845</a>
Background:	Dextranase has catalytic activity: endohydrolysis of (1->6)-alpha-D-glucosidic linkages in dextran.
Synonyms:	rabbit anti-Dextranase Antibody, dextranase, Alpha-1,6-glucan-6-glucanohydrolase, DEX



[View online »](#)

**Note:** DEXTRANASE Antibody has been tested by western blot and is suitable to be assayed against 1.0 µg of Dextranase [Penicillium species] in a standard ELISA using Peroxidase conjugated Affinity Purified anti-Rabbit IgG [H&L] (Goat) code #611-1302 and (ABTS (2,2'-azino-bis-[3-ethylbenthiazoline-6-sulfonic acid]) code # ABTS-100 as a substrate for 30 minutes at room temperature. A working dilution of 1:10,000 to 1:50,000 of the reconstitution concentration is suggested for this product.

## Product images:



Both the antiserum and IgG fractions of anti-Dextranase (Penicillium) are shown to detect under reducing conditions of SDS-PAGE the 41,000 dalton enzyme in cellular extracts. Approximately 10 µg of total protein is loaded per lane. A 1:2,000 dilution of the primary antibody is used followed by detection using HRP Goat-a-Rabbit IgG [H&L] (611-1302) diluted 1:4,000 and color development using 4-CN substrate until sufficient color develops. Other detection systems will yield similar results.