

Product datasheet for **TA396859S**

KT13 Rabbit Polyclonal Antibody

Product data:

Product Type:	Primary Antibodies
Applications:	ELISA, IP, WB
Recommended Dilution:	WB: 1:500 - 1:5,000 ELISA: 1:5,000 - 1:20,000
Host:	Rabbit
Clonality:	Polyclonal
Immunogen:	Trypsin Inhibitor [Soybean]
Specificity:	Anti-trypsin inhibitor antibody is an IgG fraction antibody purified from monospecific antiserum by a multi-step process which includes delipidation, salt fractionation and ion exchange chromatography followed by extensive dialysis against the buffer stated above. Assay by immunoelectrophoresis resulted in a single precipitin arc against anti-Rabbit Serum as well as purified and partially purified Trypsin Inhibitor [Soybean]. Cross reactivity against Trypsin Inhibitor from other sources may occur but have not been specifically determined.
Formulation:	0.02 M Potassium Phosphate, 0.15 M Sodium Chloride, pH 7.2
Concentration:	1.0 mg/mL - lot specific
Conjugation:	Unconjugated
Storage:	Store vial at -20° C or below prior to opening. This vial contains a relatively low volume of reagent (25 µL). To minimize loss of volume dilute 1:10 by adding 225 µL of the buffer stated above directly to the vial. Recap, mix thoroughly and briefly centrifuge to collect the volume at the bottom of the vial. Use this intermediate dilution when calculating final dilutions as recommended below. Store the vial at -20°C or below after dilution. Avoid cycles of freezing and thawing.
Stability:	Expiration date is three (3) months from date of receipt.
Database Link:	<u>P01070</u>
Background:	Trypsin inhibitor antibody is specific for soybean trypsin inhibitor. Soybean trypsin inhibitor inhibits trypsin, but also chymotrypsin and plasmin at a reduced level. SBTI has inhibitory effects towards plasma kallikrein and coagulation Factor Xa. Soybean trypsin inhibitor will not inhibit metalloproteases, tissue-based kallikrein, acid proteases, or thio proteases.

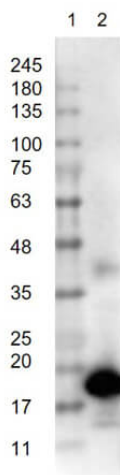


[View online »](#)

Synonyms: rabbit anti-trypsin inhibitor antibody, 25 kDa trypsin inhibitor (Protease inhibitor 15 preproprotein) antibody, CRISP8 antibody, KTi antibody, Kti S antibody, KTi3 antibody, KtiS antibody, Kunitz trypsin inhibitor antibody, Kunitz type trypsin inhibitor A antibody

Note: Soybean trypsin inhibitor antibody has been tested by ELISA and western blot and is assayed against 1.0 ug of Trypsin Inhibitor [Soybean] in a standard ELISA using Peroxidase conjugated Affinity Purified anti-Rabbit IgG #611-1302 and (ABTS (2,2'-azino-bis-[3-ethylbenthiazoline-6-sulfonic acid])) as a substrate for 30 minutes at room temperature. A working dilution of 1:3,000 to 1:12,000 of the reconstitution concentration is suggested for this product.

Product images:



Western Blot of Rabbit Anti-Trypsin Inhibitor Antibody. Lane 1: Opal PreStained Molecular Weight Marker (p/n MB-210-0500). Lane 2: Trypsin Inhibitor [50ng]. Primary Antibody: Anti-Trypsin Inhibitor at 1 µg/mL overnight at 2-8°C. Secondary Antibody: Goat Anti-Rabbit IgG HRP (p/n 611-103-122) 1:40,000 for 30mins at RT. Block: BlockOut Buffer (p/n MB-073) for 30mins at RT. Expect: ~25kDa.