

Product datasheet for **TA396858S**

LYZ Rabbit Polyclonal Antibody

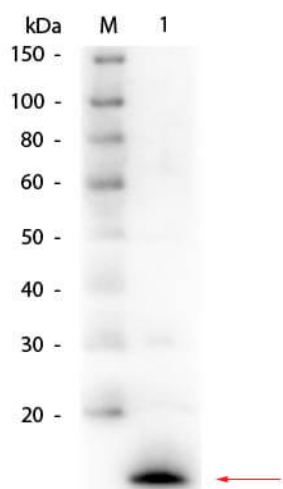
Product data:

Product Type:	Primary Antibodies
Applications:	ELISA, IHC, IP, WB
Recommended Dilution:	WB: 1:500 - 1:2,000 IHC: 1:500 - 1:2,000 ELISA: 1:25,000
Host:	Rabbit
Clonality:	Polyclonal
Immunogen:	This purified antibody was prepared from whole rabbit serum produced by repeated immunizations with full length protein corresponding to amino acids 1-129 of Hen Egg White Lysozyme.
Specificity:	This purified antibody is directed against lysozyme from hen egg white protein. This product is an IgG fraction antibody purified from monospecific antiserum by a multi-step process, which includes delipidation, salt fractionation and ion exchange chromatography followed by extensive dialysis against the buffer stated above. Assay by immunoelectrophoresis resulted in a single precipitin arc against anti-Rabbit Serum as well as purified and partially purified Lysozyme (Hen Egg White). A BLAST analysis was used to suggest that this antibody would react with all forms of lysozyme from chicken, including precursor as well as A and B chains. Chains designated as M, L, F, C, Y and D also show 100% sequence homology. Lysozyme from quail and pheasant are also reported to be 100% identical with HEW lysozyme. Cross reactivity against lysozyme from other sources may occur but has not been specifically determined.
Formulation:	0.02 M Potassium Phosphate, 0.15 M Sodium Chloride, pH 7.2
Concentration:	1.0 mg/mL - lot specific
Conjugation:	Unconjugated
Storage:	Store vial at -20° C or below prior to opening. This vial contains a relatively low volume of reagent (25 µL). To minimize loss of volume dilute 1:10 by adding 225 µL of the buffer stated above directly to the vial. Recap, mix thoroughly and briefly centrifuge to collect the volume at the bottom of the vial. Use this intermediate dilution when calculating final dilutions as recommended below. Store the vial at -20°C or below after dilution. Avoid cycles of freezing and thawing.

[View online »](#)

Stability:	Expiration date is three (3) months from date of receipt.
Gene Name:	lysozyme (renal amyloidosis)
Database Link:	P00698
Background:	Lysozyme is a relatively small (129 AA) secretory enzyme that catalyzes the hydrolysis of β -1,4 glucosidic linkages between N-acetylmuramic acid (NAM) and N-acetylglucosamine (NAG) comprising the cell walls of bacteria and to a lesser degree chitin oligomers. Lysozyme is common in animals and plants. In birds, lysozyme is also an exceptionally abundant protein in egg whites. Its biological function in fowl eggs is unclear. Hen egg white lysozyme "c" is the most commonly studied form and source of the enzyme. Lysozyme from domestic goose is designated lysozyme "g". Lysozyme is also found in vertebrates, including human, mostly in secretions and certain tissues, such as saliva, tears, milk, cervical mucus, leucocytes, kidneys and urine, where it probably serves as an anti-bacterial agent by digesting and weakening the rigid bacterial cell wall, thereby rendering the bacteria susceptible to osmotic lysis. Plant lysozyme is found in ficus and papaya latex, and is chemically distinct from the egg white enzyme.
Synonyms:	rabbit anti-Lysozyme Antibody, 1 4 beta n acetylmuramidase c antibody, EC 3.2.1.17 antibody, LYZ antibody, Lysozyme C antibody, Lysozyme C precursor antibody, LZM antibody, Hen Egg White
Note:	Anti-Lysozyme Hen Egg White purified antibody has been tested for use in ELISA and western blot. Specific conditions for reactivity should be optimized by the end user. Expect a band at ~14.4-16.2 kDa in size corresponding to lysozyme by western blotting in the appropriate cell lysate or extract.

Product images:



Western Blot of Rabbit anti-Lysozyme (Hen Egg White) Antibody. Lane 1: Lysozyme (Hen Egg White). Load: 50 ng per lane. Primary antibody: Rabbit anti-Lysozyme (Hen Egg White) Antibody at 1:1,000 overnight at 4°C. Secondary antibody: HRP rabbit secondary antibody at 1:40,000 for 30 min at RT. Block: MB-070 for 30 min at RT. Predicted/Observed size: 4.9 kDa, 4.9 kDa for Lysozyme (Hen Egg White).