

Product datasheet for **TA396857**

CAT Rabbit Polyclonal Antibody

Product data:

Product Type:	Primary Antibodies
Applications:	ELISA, IHC, WB
Recommended Dilution:	WB: 1:10,000 - 1:50,000 IHC: User Optimized ELISA: 1:20,000
Reactivity:	Human, Mouse, Rat
Host:	Rabbit
Clonality:	Polyclonal
Immunogen:	Catalase [Bovine Liver]
Specificity:	Anti-Catalase Antibody is an IgG fraction antibody purified from monospecific antiserum by a multi-step process which includes delipidation, salt fractionation and ion exchange chromatography followed by extensive dialysis against the buffer stated above. Assay by immunoelectrophoresis resulted in a single precipitin arc against anti-Rabbit Serum as well as purified and partially purified Catalase [Bovine liver]. Cross reactivity against Catalase from other tissues and species may occur but have not been specifically determined.
Formulation:	0.02 M Potassium Phosphate, 0.15 M Sodium Chloride, pH 7.2
Concentration:	1.0 mg/mL - lot specific
Conjugation:	Unconjugated
Storage:	Store vial at -20° C or below prior to opening. This vial contains a relatively low volume of reagent (25 µL). To minimize loss of volume dilute 1:10 by adding 225 µL of the buffer stated above directly to the vial. Recap, mix thoroughly and briefly centrifuge to collect the volume at the bottom of the vial. Use this intermediate dilution when calculating final dilutions as recommended below. Store the vial at -20°C or below after dilution. Avoid cycles of freezing and thawing.
Stability:	Expiration date is three (3) months from date of receipt.
Database Link:	P00432



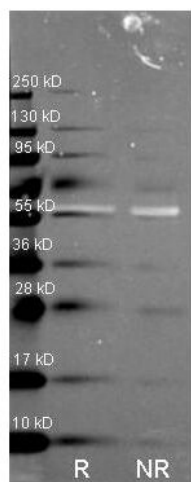
[View online »](#)

Background: Anti-Catalase Antibody detects catalase. Catalase is a common enzyme found in nearly all living organisms exposed to oxygen. It catalyzes the decomposition of hydrogen peroxide to water and oxygen. Catalase is necessary in cells to protect them from the toxic effects of hydrogen peroxide and to promote growth of cells. Anti-Catalase antibody is ideal for investigators involved in Cell Signaling, Neuroscience and Signal Transduction research.

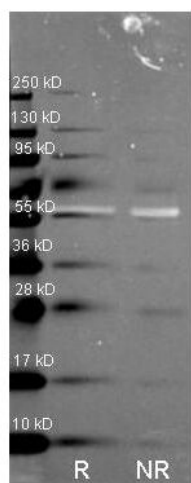
Synonyms: rabbit anti-Catalase Antibody, Cas 1 antibody, CAT antibody, Cs1 antibody, MGC138422 antibody, MGC138424 antibody

Note: Anti-Catalase is tested for use in ELISA, western blot, and immunohistochemistry. Specific conditions for reactivity should be optimized by the end user.

Product images:



Western Blot of Rabbit anti-Catalase antibody. Lane 1: purified Catalase reduced. Lane 2: purified Catalase non-reduced. Load: ~1 μ g per lane. Primary antibody: anti Catalase antibody at 1:1000 for overnight at 4°C. Secondary antibody: Dylight 488 conjugated Donkey anti rabbit secondary antibody at 1:10,000 for 1.5 hours at RT. Block: MB-070 overnight at 4°C. Predicted/Observed size: 59.9 kDa, 55kDa for Catalase. Other band(s): none.



Western Blot of Rabbit anti-Catalase antibody. Lane 1: purified Catalase reduced. Lane 2: purified Catalase non-reduced. Load: ~1 μ g per lane. Primary antibody: anti Catalase antibody at 1:1000 for overnight at 4°C. Secondary antibody: Dylight 488 conjugated Donkey anti rabbit secondary antibody at 1:10,000 for 1.5 hours at RT. Block: MB-070 overnight at 4°C. Predicted/Observed size: 59.9 kDa, 55kDa for Catalase. Other band(s): none.