

Product datasheet for **TA396856S**

CPB1 Rabbit Polyclonal Antibody

Product data:

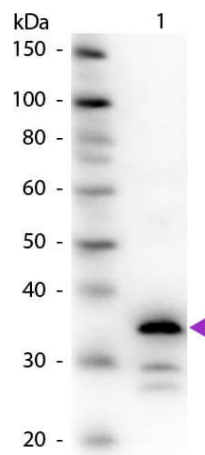
Product Type:	Primary Antibodies
Applications:	ELISA, IHC, WB
Recommended Dilution:	WB: 1:500- 1:2,000 IHC: 1:250 - 1:1,000 ELISA: 1:2,000 - 1:10,000
Reactivity:	Porcine
Host:	Rabbit
Clonality:	Polyclonal
Immunogen:	Carboxypeptidase B [Porcine Pancreas]
Specificity:	Anti-CARBOXYPEPTIDASE B is an IgG fraction antibody purified from monospecific antiserum by a multi-step process which includes delipidation, salt fractionation and ion exchange chromatography followed by extensive dialysis against the buffer stated above. Assay by immunoelectrophoresis resulted in a single precipitin arc against anti-Rabbit Serum as well as purified and partially purified Carboxypeptidase B [Porcine Pancreas]. Cross reactivity against Carboxypeptidase B from other tissues and species may occur but have not been specifically determined.
Formulation:	0.02 M Potassium Phosphate, 0.15 M Sodium Chloride, pH 7.2
Concentration:	1.0 mg/ml - lot specific
Conjugation:	Unconjugated
Storage:	Store vial at -20° C or below prior to opening. This vial contains a relatively low volume of reagent (25 µL). To minimize loss of volume dilute 1:10 by adding 225 µL of the buffer stated above directly to the vial. Recap, mix thoroughly and briefly centrifuge to collect the volume at the bottom of the vial. Use this intermediate dilution when calculating final dilutions as recommended below. Store the vial at -20°C or below after dilution. Avoid cycles of freezing and thawing.
Stability:	Expiration date is one (1) year from date of receipt.
Database Link:	P09955



[View online »](#)

- Background:** Carboxypeptidase B is a carboxypeptidase that preferentially acts upon basic amino acids, such as arginine and lysine. This serum enzyme is also responsible for rapidly metabolizing the C5a protein into C5a des-Arg, with one less amino acid. Anti-CARBOXYPEPTIDASE B is ideal for investigators researching enzyme antibodies.
- Synonyms:** rabbit anti-Carboxypeptidase B antibody, CarboxypeptidaseB1 antibody, CP B1 antibody, CPB 1 antibody, CPB antibody, CPB1 antibody, DKFZp779K1333 antibody, Pancreas specific protein antibody, Pancreatic carboxypeptidase B1 antibody
- Note:** Anti-Carboxypeptidase B antibody has been tested by ELISA and western blot and is suitable for Immunohistochemistry applications. Specific conditions for reactivity should be optimized by the end user.

Product images:



Western Blot of Rabbit Anti-Carboxypeptidase B antibody. Lane 1: Carboxypeptidase B. Lane 2: None. Load: 50 ng per lane. Primary antibody: Carboxypeptidase B primary antibody at 1:1,000 overnight at 4°C. Secondary antibody: Peroxidase rabbit secondary antibody at 1:40,000 for 30 min at RT. Blocking: MB-070 for 30 min at RT. Predicted/Observed size: 35 kDa, 35 kDa for Carboxypeptidase B. Other band(s): Carboxypeptidase B splice variants and isoforms.