

Product datasheet for **TA396854**

Mouse Monoclonal Antibody [Clone ID: 33D10.D2.G8]

Product data:

Product Type:	Primary Antibodies
Clone Name:	33D10.D2.G8
Applications:	IF, WB
Recommended Dilution:	WB: >1:10,000 IF: >1:5,000 FLISA: >1:20,000
Host:	Mouse
Isotype:	IgG1, kappa
Clonality:	Monoclonal
Immunogen:	HIS Tag antibody was produced in mice by repeated immunizations with 6X His epitope tag peptide H-H-H-H-H-H conjugated to KLH using maleimide.
Specificity:	6X HIS Epitope Tag ATTO 647N conjugated antibody is directed against the 6X His motif and is useful in determining its presence in various assays. This monoclonal anti-6X His tag antibody detects over-expressed proteins containing the 6X His epitope tag. To date, this antibody has reacted with all His tagged proteins so far tested. In western blotting of bacterial extracts, the antibody does not cross-react with endogenous proteins. The antibody recognizes the His-tag (His-His-His-His-His-His) fused to either the amino- or carboxy-termini of targeted proteins in transfected or transformed cells.
Formulation:	0.02 M Potassium Phosphate, 0.15 M Sodium Chloride, pH 7.2
Reconstitution Method:	Restore with deionized water (or equivalent) - Reconstitution Volume: 50µL
Concentration:	1.0 mg/mL - lot specific
Conjugation:	ATTO 594
Storage:	Store vial at 4° C prior to restoration. For extended storage aliquot contents and freeze at -20° C or below. Avoid cycles of freezing and thawing. Centrifuge product if not completely clear after standing at room temperature. This product is stable for several weeks at 4° C as an undiluted liquid. Dilute only prior to immediate use.
Stability:	Expiration date is one (1) year from date of receipt.



[View online »](#)

Background:

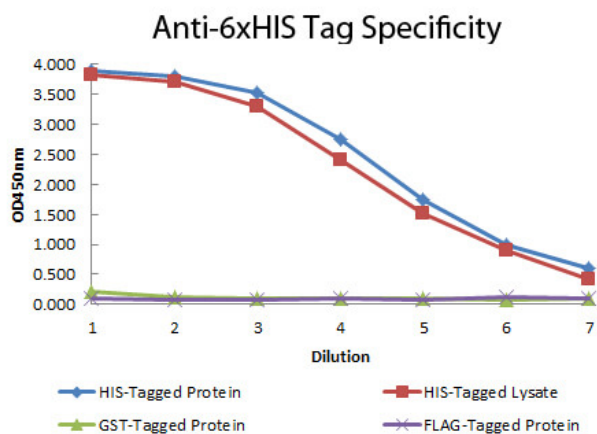
6X His Tag ATTO 647N conjugated Antibody as well as other Epitope tags are short peptide sequences that are easily recognized by tag-specific antibodies. Due to their small size, epitope tags do not affect the tagged protein's biochemical properties. Most often sequences encoding the epitope tag are included with target DNA at the time of cloning to produce fusion proteins containing the epitope tag sequence. This allows anti-epitope tag antibodies to serve as universal detection reagents for any tag containing protein produced by recombinant means. This means that anti-epitope tag antibodies are a useful alternative to generating specific antibodies to identify, immunoprecipitate or immunoaffinity purify a recombinant protein. The anti-epitope tag antibody is usually functional in a variety of antibody-dependent experimental procedures. Expression vectors producing epitope tag fusion proteins are available for a variety of host expression systems including bacteria, yeast, insect and mammalian cells. Rockland Immunochemicals produces anti-epitope tag antibodies against many common epitope tags including Myc, GST, GFP, 6X His, MBP, FLAG and HA. Rockland Immunochemicals also produces antibodies to other tags including FITC, Rhodamine (TRITC), DNP and biotin.

Synonyms:

mouse anti-6X His Tag ATTO 647N conjugated Antibody, ATTO 647N conjugated mouse anti-6X His Tag Antibody, anti-HIS, HIS Antibody, 6X His Tag Antibody, HHHHHH epitope tag antibody, AT647N, ATTO 647N, ATTO-TEC 647N

Note:

Anti-6X His is optimally suited for monitoring expression of His-tagged fusion proteins. As such, anti-6X His/6X His can be used to identify fusion proteins that contain the 6X His epitope. The antibody recognizes the His tag fused either to the amino- or carboxy- termini of targeted proteins. This antibody has been tested by ELISA, dot blot, and western blotting against both the immunizing peptide and His-containing recombinant proteins. ATTOs are designed for STED microscopy, FRET, immunofluorescence microscopy, fluorescence based plate assays (FLISA) and fluorescent western blotting. This product is also suitable for multiplex analysis, including multicolor imaging, utilizing various commercial platforms.

Product images:

ELISA of Mouse anti-6xHIS Tag Antibody. Antigen: HIS-tagged purified protein and E. coli cell lysates expressing HIS-Tagged construct, GST- and RON-tagged purified proteins. Coating amount: 0.15ug per well. Primary antibody: 6xHIS Tag antibody at 100ug/mL. Dilution series: 2-fold. Mid-point concentration: 200ng/mL. Secondary antibody: Peroxidase mouse secondary antibody at 1:10,000. Substrate: TMB (p/n TMBE-1000).