

Product datasheet for **TA396832**

MAP2K1 Mouse Monoclonal Antibody [Clone ID: 13B6.G12]

Product data:

Product Type:	Primary Antibodies
Clone Name:	13B6.G12
Applications:	ELISA, WB
Recommended Dilution:	WB: 1 µg/mL ELISA: 1:40,000
Reactivity:	Human, Mouse, Rat
Host:	Mouse
Isotype:	IgG1, kappa
Clonality:	Monoclonal
Immunogen:	Anti-MEK1 Monoclonal Antibody was produced in mice by repeated immunizations with synthetic peptide corresponding to amino acid residues near the C-terminus conjugated to KLH.
Specificity:	This peroxidase conjugated protein A purified mouse monoclonal antibody reacts specifically with human MEK1. Anti-MEK1 is purified from tissue culture supernatant by protein A purification. Cross reactivity is expected to occur with human, mouse, and rat based on sequence identity of the peptide immunogen. This antibody does not react with the MEK2 isoform.
Formulation:	0.02 M Potassium Phosphate, 0.15 M Sodium Chloride, pH 7.2
Reconstitution Method:	Restore with deionized water (or equivalent) - Reconstitution Volume: 100 µL
Concentration:	1.0 mg/mL - lot specific
Conjugation:	HRP
Storage:	Store vial at -20° C or below prior to opening. This vial contains a relatively low volume of reagent (25 µL). To minimize loss of volume dilute 1:10 by adding 225 µL of the buffer stated above directly to the vial. Recap, mix thoroughly and briefly centrifuge to collect the volume at the bottom of the vial. Use this intermediate dilution when calculating final dilutions as recommended below. Store the vial at -20°C or below after dilution. Avoid cycles of freezing and thawing.
Stability:	Expiration date is one (1) year from date of receipt.



[View online »](#)

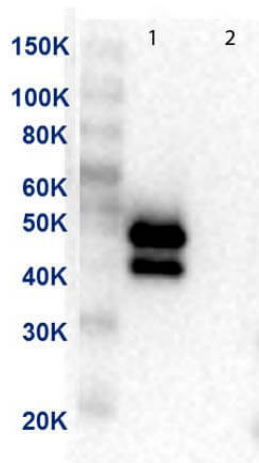
Database Link: [Q02750](#)

Background: MEK1 antibodies detect the MEK1 isoform. Mitogen-activated protein kinase kinase 1, also known as MKK or MEK1, is an integral component of the MAP kinase cascade that regulates cell growth and differentiation. This pathway also plays a key role in synaptic plasticity in the brain. Activated MEK 1 acts as a dual specificity kinase phosphorylating both a threonine and a tyrosine residue on MAP kinase. MEK1 and MEK2 are about 80% identical to each other, and nearly identical within the kinase domain. The MEK1 antibody is ideal for investigators involved in Neuroscience, Cell Signaling and Cancer Research.

Synonyms: mouse anti-MEK1 antibody HRP conjugation, peroxidase conjugated mouse anti-MEK1 antibody, MAP2K, MEK, MEK 1, MKK1, PRKMK1, MEK-1 Antibody

Note: Anti-MEK 1 HRP Conjugated (MOUSE) Antibody is suitable for use in Western Blotting and ELISA. Specific conditions of reactivity should be optimized by the end user. Expect a band of approximately 43.5 kDa.

Product images:



Western Blot of Anti-MEK1 Antibody. Lane 1: MEK-1 recombinant protein. Lane 2: MEK-2 recombinant protein. Load: 50ng per lane. Primary Antibody: Anti-MEK1 supernatant clone neat over night at 4°C. Secondary Antibody: Anti-mouse HRP at 1:40,000 dilution.