

Product datasheet for **TA396830**

Mouse Monoclonal Antibody [Clone ID: 29E4.G7]

Product data:

Product Type:	Primary Antibodies
Clone Name:	29E4.G7
Applications:	ELISA, IHC, WB
Recommended Dilution:	WB: 1:10,000 IHC: 1:500-1:2,500 ELISA: 1:10,000-1:50,000
Host:	Mouse
Isotype:	IgG2a, kappa
Clonality:	Monoclonal
Immunogen:	This antibody was produced in mice by repeated immunizations with a synthetic peptide corresponding to the FLAG™ epitope tag peptide DYKDDDDK (Asp-Tyr-Lys-Asp-Asp-Asp-Asp-Lys) conjugated to KLH using maleimide.
Specificity:	This antibody is directed against the FLAG™ epitope tag and is useful in determining its presence in over expressed proteins in various assays. The antibody recognizes the FLAG™ epitope tag (Asp-Tyr-Lys-Asp-Asp-Asp-Asp-Lys) fused to either the amino- or carboxy- termini of targeted proteins in transfected or transformed cells.
Formulation:	0.02 M Potassium Phosphate, 0.15 M Sodium Chloride, pH 7.2
Reconstitution Method:	Restore with deionized water (or equivalent) - Reconstitution Volume: 100 µL
Concentration:	1.0 mg/mL - lot specific
Conjugation:	HRP
Storage:	Store vial at 4° C prior to restoration. For extended storage aliquot contents and freeze at -20° C or below. Avoid cycles of freezing and thawing. Centrifuge product if not completely clear after standing at room temperature. This product is stable for several weeks at 4° C as an undiluted liquid. Dilute only prior to immediate use.
Stability:	Expiration date is one (1) year from date of receipt.



[View online »](#)

Background:

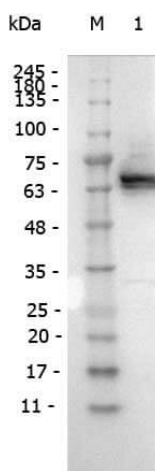
Epitope tags are short peptide sequences that are easily recognized by tag-specific antibodies. Due to their small size, epitope tags do not affect the tagged protein's biochemical properties. Most often sequences encoding the epitope tag are included with target DNA at the time of cloning to produce fusion proteins containing the epitope tag sequence. This allows anti-epitope tag antibodies to serve as universal detection reagents for any tag containing protein produced by recombinant means. This means that anti-epitope tag antibodies are a useful alternative to generating specific antibodies to identify, immunoprecipitate or immunoaffinity purify a recombinant protein. The anti-epitope tag antibody is usually functional in a variety of antibody-dependent experimental procedures. Expression vectors producing epitope tag fusion proteins are available for a variety of host expression systems including bacteria, yeast, insect and mammalian cells. Rockland Immunochemicals produces anti-epitope tag antibodies against many common epitope tags including Myc, GST, GFP, 6X His, MBP, FLAG™ and HA. Rockland Immunochemicals also produces antibodies to other tags including FITC, Rhodamine (TRITC), DNP and biotin.

Synonyms:

mouse anti-FLAG™ tag HRP conjugation, Enterokinase Cleavage Site (ECS), peroxidase conjugated mouse anti-DYKDDDDK, Asp-Tyr-Lys-Asp-Asp-Asp-Lys

Note:

Anti-FLAG Peroxidase has been tested by ELISA and western blot. This antibody is optimally suited for monitoring the expression of FLAG™ tagged fusion proteins. As such, this antibody can be used to identify fusion proteins containing the FLAG™ epitope. The antibody recognizes the epitope tag fused to either the amino- or carboxy- termini of targeted proteins. The epitope tag peptide sequence was first derived from the 11-amino-acid leader peptide of the gene-10 product from bacteriophage T7. DYKDDDDK is the most commonly used hydrophilic octapeptide tag.

Product images:

Western Blot of Mouse antibody for the detection of FLAG™ conjugated proteins Monoclonal Antibody Peroxidase Conjugated. Lane 1: FLAG™ Positive Control Lysates. Load: 10 µg per lane. Primary antibody: FLAG™ Monoclonal Antibody Peroxidase Conjugated at 1:1,000 for overnight at 4°C. Secondary antibody: none. Block: Blocking Buffer for Fluorescent Western Blotting for 30 min at RT. Predicted/Observed size: ~60 kDa, ~60 kDa.