

Product datasheet for **TA396821S**

PAX6 Mouse Monoclonal Antibody [Clone ID: 7H10.D3.D4.G5]

Product data:

Product Type:	Primary Antibodies
Clone Name:	7H10.D3.D4.G5
Applications:	ELISA, IF, WB
Recommended Dilution:	WB: 1:500 - 1:2,000 IF: 1:100 ELISA: 1:75,000 - 1:150,000
Reactivity:	Human
Host:	Mouse
Isotype:	IgG1, kappa
Clonality:	Monoclonal
Immunogen:	PAX6 protein A purified antibody was prepared in mice by repeated immunizations with a recombinant protein corresponding to human PAX6 protein.
Specificity:	Anti-PAX6 was purified from clarified ascites by Protein A chromatography. Cross-reactivity with PAX6 from other sources has not been determined.
Formulation:	0.02 M Potassium Phosphate, 0.15 M Sodium Chloride, pH 7.2
Concentration:	1.0 mg/mL - lot specific
Conjugation:	Unconjugated
Storage:	Store vial at -20° C or below prior to opening. This vial contains a relatively low volume of reagent (25 µL). To minimize loss of volume dilute 1:10 by adding 225 µL of the buffer stated above directly to the vial. Recap, mix thoroughly and briefly centrifuge to collect the volume at the bottom of the vial. Use this intermediate dilution when calculating final dilutions as recommended below. Store the vial at -20°C or below after dilution. Avoid cycles of freezing and thawing.
Stability:	Expiration date is one (1) year from date of receipt.
Gene Name:	paired box 6
Database Link:	Entrez Gene 5080 Human P26367

[View online »](#)

Background:

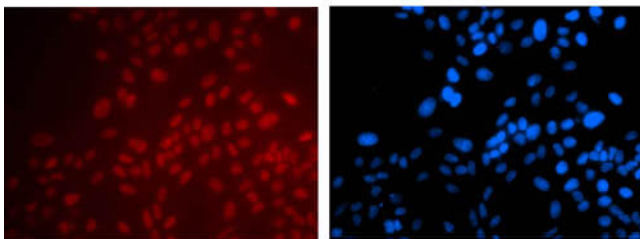
Paired box protein Pax-6 also known as aniridia type II protein (AN2) or oculorhombin is a transcription factor with key functions in the development of the eye, nose, central nervous system and pancreas. Pax6 further seems to be required for the differentiation of pancreatic islet alpha cells. PAX6 has been shown to bind to a promoter element in the glucagon, insulin and somatostatin promoters and regulates the specification of the ventral neuron subtypes by establishing the correct progenitor domains. Isoform 5a appears to function as a molecular switch that specifies target genes. Anti-PAX6 antibody is ideal for researchers interested in developmental biology, stem cell research, cell growth and cancer research.

Synonyms:

mouse anti-pax6 antibody, Paired box protein Pax-6, Aniridia type II protein, Oculorhombin, AN2, PAX 6 Antibody

Note:

Anti-PAX6 antibody has been tested by ELISA and Immunofluorescence and suitable for Western Blotting. Specific conditions for reactivity should be optimized by the end user. Expect a band approximately 46.7 kDa in size corresponding to PAX6 by western blotting in the appropriate cell lysate or extract.

Product images:


Immunofluorescence Microscopy of Mouse anti-PAX6 antibody. Tissue: HeLa Cell, 20X. Fixation: 4% PFA room temp for 10 min. Antigen retrieval: not required. Primary antibody: PAX6 antibody at 1:100 for 1 h at RT. Secondary antibody: goat anti-mouse secondary antibody at 1:1,000 for 45 min at RT. Localization: PAX6 is nuclear. Staining: PAX6 as red fluorescent signal with DAPI (blue) nuclear counterstain. Images courtesy of Yang Xiang with Boston Children's Hospital.