

## Product datasheet for **TA396808S**

### **CALCA Monoclonal Antibody [Clone ID: 8G10.H3.C3.G4.E2.C8]**

#### **Product data:**

<b>Product Type:</b>	Primary Antibodies
<b>Clone Name:</b>	8G10.H3.C3.G4.E2.C8
<b>Applications:</b>	ELISA, WB
<b>Recommended Dilution:</b>	<b>WB:</b> 1:1,000 - 1:2,000 <b>ELISA:</b> User Optimized
<b>Reactivity:</b>	Human
<b>Isotype:</b>	IgG1, lambda
<b>Clonality:</b>	Monoclonal
<b>Immunogen:</b>	Procalcitonin Antibody was produced in mice prepared by repeated immunizations with full-length recombinant human Procalcitonin protein.
<b>Specificity:</b>	Anti-Procalcitonin Antibody was purified from concentrated tissue culture supernate by Protein A chromatography. This antibody is specific for human Procalcitonin. Cross-reactivity with Procalcitonin from other sources has not been determined.
<b>Formulation:</b>	0.02 M Potassium Phosphate, 0.15 M Sodium Chloride, pH 7.2
<b>Concentration:</b>	1.0 mg/ml - lot specific
<b>Conjugation:</b>	Unconjugated
<b>Storage:</b>	Store vial at -20° C prior to opening. Aliquot contents and freeze at -20° C or below for extended storage. Avoid cycles of freezing and thawing. Centrifuge product if not completely clear after standing at room temperature. This product is stable for several weeks at 4° C as an undiluted liquid. Dilute only prior to immediate use.
<b>Stability:</b>	Expiration date is one (1) year from date of receipt.
<b>Database Link:</b>	<a href="#">P06881</a>



[View online »](#)

**Background:**

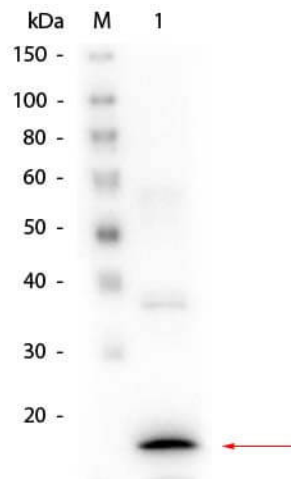
Anti-Procalcitonin antibody detects human Procalcitonin. Procalcitonin is a peptide hormone mainly produced by the C cells of the thyroid and certain endocrine cells of the lung. Under normal expression conditions, procalcitonin is immediately cleaved into three specific fragments, a N terminal residue, calcitonin and katacalcin. Levels of unprocessed procalcitonin rise significantly after bacterial infection, trauma or shock. This gene encodes the peptide hormones calcitonin, calcitonin gene-related peptide and katacalcin by tissue-specific alternative RNA splicing of the gene transcripts and cleavage of inactive precursor proteins. Calcitonin is involved in calcium regulation and acts to regulate phosphorus metabolism. Calcitonin gene-related peptide functions as a vasodilator while katacalcin is a calcium-lowering peptide. Multiple transcript variants encoding different isoforms have been found for this gene.

**Synonyms:**

mouse anti-procalcitonin antibody, calcitonin isoform CT preproprotein, calcitonin-related polypeptide alpha, CT, KC, CGRP, CALC1, CGRP1, CGRP-I

**Note:**

Anti-Procalcitonin [8G10.H3] antibody was tested by ELISA and Western Blot. Specific conditions for reactivity should be optimized by the end user.

**Product images:**

Western Blot of Mouse anti-Procalcitonin Antibody. Lane 1: rProcalcitonin. Load: 50 ng. Primary antibody: Mouse anti-Procalcitonin at 1:1,000 overnight at 4°C. Secondary antibody: Peroxidase mouse secondary antibody at 1:40,000 for 30 min at RT. Block: MB-070 for 30 min at RT. Predicted/Observed size: 13.9 kDa, 13.9 kDa



Western Blot of Mouse Anti-Procalcitonin antibody. Lane 1: MW. Lane 2: Procalcitonin Protein. Load: 5  $\mu$ g per lane. Primary antibody: Procalcitonin antibody at NEAT overnight at 4°C. Secondary antibody: HRP Mouse IgG secondary antibody at 1:40,000 for 30 min at RT. Block: MB-070 overnight at 4°C. Predicted/Observed size: 13.9 kDa.