

Product datasheet for **TA396799**

Mouse Monoclonal Antibody [Clone ID: 32D8.D9]

Product data:

Product Type:	Primary Antibodies
Clone Name:	32D8.D9
Applications:	ELISA, FC, IF, IHC, WB
Recommended Dilution:	WB: 1:2000-1:5000 IHC: User Optimized IF: User Optimized FC: User Optimized ELISA: 1:1000-1:10000
Reactivity:	IdU
Host:	Mouse
Isotype:	IgG1, kappa
Clonality:	Monoclonal
Immunogen:	Anti-IdU monoclonal antibody was produced in mice by repeated immunizations prepared via immunizations with BromodeoxyUridine-KLH followed by hybridoma development.
Specificity:	Anti-IdU Monoclonal Antibody was purified from ascites fluid by Protein A chromatography. This antibody is specific for IdU. Cross-reactivity is not observed with BrdU, CldU or FdU.
Formulation:	0.02 M Potassium Phosphate, 0.15 M Sodium Chloride, pH 7.2
Concentration:	1.0 mg/ml - lot specific
Conjugation:	Unconjugated
Storage:	Store IdU Antibody at -20° C prior to opening. Aliquot contents and freeze at -20° C or below for extended storage. Avoid cycles of freezing and thawing. Centrifuge product if not completely clear after standing at room temperature. This product is stable for several weeks at 4° C as an undiluted liquid. Dilute only prior to immediate use.
Stability:	Expiration date is one (1) year from date of receipt.



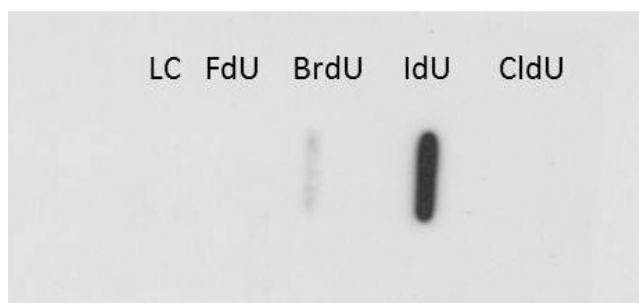
[View online »](#)

Background: Iododeoxyuridine (5-Iodo-2'-deoxyuridine, IdU) is a synthetic thymidine nucleoside analog. IdU, like BrdU thymidine analog, is used to allow the detection of growing or proliferating cells in living tissues. During the S-phase of cell division, DNA replication occurs, and IdU can be incorporated into the newly synthesized DNA by substituting for naturally occurring thymidine. Antibodies specific for IdU are subsequently used to detect the incorporated IdU thymidine analog. This highlights cells that were actively replicating their DNA and is suggestive of actively growing cells. Antibody binding usually requires the DNA to be denatured, typically by exposing the cells to acid or heat.

Synonyms: mouse anti-IdU antibody, Iododeoxyuridine, 5-iodo-2'-deoxyuridine

Note: Anti-IdU Antibody has been tested as suitable for western blot, ELISA, and immunofluorescence microscopy. This antibody may be suitable for additional immunoassays including flow cytometry and immunohistochemistry. Specific conditions for reactivity should be optimized by the end user. Expect to detect incorporated IdU thymidine analog from replicated cells.

Product images:



Western Blot of Anti-IdU Antibody. Lane 1: loading control. Lane 2: FdU. Lane 3: BrdU. Lane 4: IdU. Lane 5: CIdU. Load: 20 µg per lane. Primary antibody: Anti-IdU antibody at 1:1000 for overnight at 4°C. Secondary antibody: IRDye800™ mouse secondary antibody at 1:10,000 for 45 min at RT. Block: 5% BLOTTO overnight at 4°C. Predicted/Observed: IdU. Other band(s): no cross reactive bands were observed for other nucleoside analogs.