

Product datasheet for **TA396789S**

MAPK1 Mouse Monoclonal Antibody [Clone ID: 3H9.A1.A8]

Product data:

Product Type:	Primary Antibodies
Clone Name:	3H9.A1.A8
Applications:	ELISA, WB
Recommended Dilution:	WB: 1 µg/mL ELISA: 1:40,000
Reactivity:	Human, Mouse, Rat
Host:	Mouse
Clonality:	Monoclonal
Immunogen:	Anti-ERK2 Monoclonal Antibody was produced in mice by repeated immunizations with synthetic peptide corresponding to amino acid residues near an internal region of ERK2 conjugated to KLH.
Specificity:	This protein A purified mouse monoclonal antibody reacts specifically with human ERK2. Anti-ERK2 is purified from tissue culture supernatant by protein A purification. Cross reactivity is expected to occur with human, mouse, and rat based on sequence identity of the peptide immunogen. This antibody does not react with the ERK1 isoform.
Formulation:	0.02 M Potassium Phosphate, 0.15 M Sodium Chloride, pH 7.2
Concentration:	1.0 mg/ml - lot specific
Conjugation:	Unconjugated
Storage:	Store vial at -20° C or below prior to opening. This vial contains a relatively low volume of reagent (25 µL). To minimize loss of volume dilute 1:10 by adding 225 µL of the buffer stated above directly to the vial. Recap, mix thoroughly and briefly centrifuge to collect the volume at the bottom of the vial. Use this intermediate dilution when calculating final dilutions as recommended below. Store the vial at -20°C or below after dilution. Avoid cycles of freezing and thawing.
Stability:	Expiration date is one (1) year from date of receipt.
Database Link:	P28482



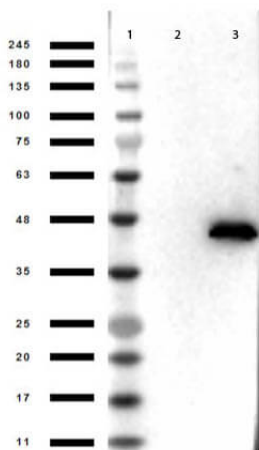
[View online »](#)

Background: ERK2 antibodies detect the ERK2 isoform. Mitogen activated protein kinase 1, also known as MAPK1, ERK, or ERK2, is an integral component of the MAP kinase cascade that regulates cell growth and differentiation. ERK1 and ERK2 are activated by MEK1 and MEK2 in the B-raf signaling pathway resulting in its translocation to the nucleus where it phosphorylates nuclear targets. Human ERK1 and ERK2 are 84% identical in sequence and share common functionality in cells. Anti-ERK2 antibody is ideal for investigators involved in Neuroscience, Cell Signaling and Cancer Research.

Synonyms: mouse anti-ERK2 antibody, MAPK1, ERK, ERK-2, ERK2, MAPK2, P42MAPK, PRKM1, PRKM2, ERK-2 Antibody

Note: Anti-ERK 2 (MOUSE) antibody has been tested by ELISA and Western Blotting. Specific conditions of reactivity should be optimized by the end user. Expect a band of approximately 41 kDa.

Product images:



Western Blot of Mouse anti-ERK2 Antibody. Lane 1: Opal Pre-Stained Molecular Weight Ladder (p/n MB-210-0500). Lane 2: ERK1 50ng. Lane 3: ERK2 50ng. Primary Antibody: Anti-ERK2 (internal) Monoclonal Antibody at 1 µg/mL. Secondary Antibody: Rabbit anti-Mouse IgG HRP (p/n 610-403-C46) at 1:40,000. Blocking Buffer: BlockOut (p/n MB-073) for 30 min at RT. Expect: ~41kDa seen in lane 3 only.