

## Product datasheet for **TA396775S**

### **BIN3 Mouse Monoclonal Antibody [Clone ID: 3A4]**

#### **Product data:**

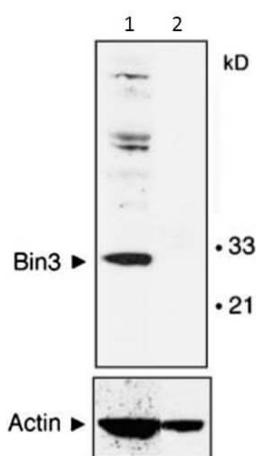
Product Type:	Primary Antibodies
Clone Name:	3A4
Applications:	ELISA, IP, WB
Recommended Dilution:	<b>WB:</b> 1:500-1:1500 <b>ELISA:</b> 1:5000 - 1:50000
Reactivity:	Mouse
Host:	Mouse
Isotype:	IgG1
Clonality:	Monoclonal
Immunogen:	Anti-BIN3 (MOUSE) Monoclonal Antibody was produced in mouse by repeated immunizations with a full length human BIN3 recombinant protein followed by hybridoma development.
Specificity:	Anti-BIN3 was purified from clarified mouse ascetic fluid by Protein A chromatography followed by extensive dialysis against the buffer stated above. BIN3 antibody is specific for human BIN3 protein. A BLAST analysis was used to suggest cross-reactivity with BIN3 from human and mouse sources based on 100% homology with the immunizing sequence. Cross-reactivity with BIN3 from other sources has not been determined.
Formulation:	0.02 M Potassium Phosphate, 0.15 M Sodium Chloride, pH 7.2
Concentration:	1.0 mg/mL - lot specific
Conjugation:	Unconjugated
Storage:	Store vial at -20° C or below prior to opening. This vial contains a relatively low volume of reagent (25 µL). To minimize loss of volume dilute 1:10 by adding 225 µL of the buffer stated above directly to the vial. Recap, mix thoroughly and briefly centrifuge to collect the volume at the bottom of the vial. Use this intermediate dilution when calculating final dilutions as recommended below. Store the vial at -20°C or below after dilution. Avoid cycles of freezing and thawing.
Stability:	Expiration date is one (1) year from date of receipt.
Gene Name:	bridging integrator 3
Database Link:	<a href="#">Q9NQY0</a>



[View online »](#)

- Background:** BIN-3 encodes an evolutionarily conserved and ubiquitously expressed member of the BAR superfamily of curved membrane and GTPase-binding proteins implicated in signal transduction and vesicular trafficking. In humans, Bin3 maps to chromosome 8p21.3, a region widely implicated in cancer suppression that is often deleted in non-Hodgkin's lymphomas and various epithelial tumors. Study in mouse suggests that homozygous inactivation of Bin3 causes cataracts and an increased susceptibility to lymphomas during aging.
- Synonyms:** mouse anti-BIN3 Antibody, Bridging integrator 3, BIN-3, BIN 3, BIN3 antibody, anti-BIN-3 antibody
- Note:** Anti-BIN3 antibody has been tested for use in ELISA, Western Blot, and IP. Specific conditions for reactivity should be optimized by the end user.

### Product images:



Western Blot of Mouse Anti-BIN3 antibody. Lane 1: MEF cells wild type. Lane 2: MEF cells null mice. Load: 35  $\mu$ g per lane. Primary antibody: BIN3 antibody overnight at 4°C. Secondary antibody: IRDye800™ mouse secondary antibody for 45 min at RT. Block: 5% BLOTTO overnight at 4°C. Predicted/Observed size: 29.7 kDa, 30 kDa for BIN-3. Other band(s): non-specific.