

Product datasheet for **TA396774S**

BIN1 Mouse Monoclonal Antibody [Clone ID: 2F11]

Product data:

Product Type:	Primary Antibodies
Clone Name:	2F11
Applications:	ELISA, IHC, IP, WB
Recommended Dilution:	WB: 1:500-1:1500 IHC: 1:100-1:500 ELISA: 1:5000-1:50000
Reactivity:	Mouse
Host:	Mouse
Isotype:	IgG1
Clonality:	Monoclonal
Immunogen:	Anti-BIN1 (MOUSE) Monoclonal Antibody was produced in mouse by repeated immunizations with chimeric protein that encoded the human BIN1 BAR domain followed by hybridoma development.
Specificity:	Anti-BIN1 was purified from clarified mouse ascetic fluid by Protein A chromatography followed by extensive dialysis against the buffer stated above. BIN1 antibody is specific for human BIN1 protein. A BLAST analysis was used to suggest cross-reactivity with BIN1 from human and mouse sources based on 100% homology with the immunizing sequence. Cross-reactivity with BIN1 from other sources has not been determined.
Formulation:	0.02 M Potassium Phosphate, 0.15 M Sodium Chloride, pH 7.2
Concentration:	1.0 mg/mL - lot specific
Conjugation:	Unconjugated
Storage:	Store vial at -20° C or below prior to opening. This vial contains a relatively low volume of reagent (25 µL). To minimize loss of volume dilute 1:10 by adding 225 µL of the buffer stated above directly to the vial. Recap, mix thoroughly and briefly centrifuge to collect the volume at the bottom of the vial. Use this intermediate dilution when calculating final dilutions as recommended below. Store the vial at -20°C or below after dilution. Avoid cycles of freezing and thawing.
Stability:	Expiration date is one (1) year from date of receipt.
Gene Name:	bridging integrator 1



[View online »](#)

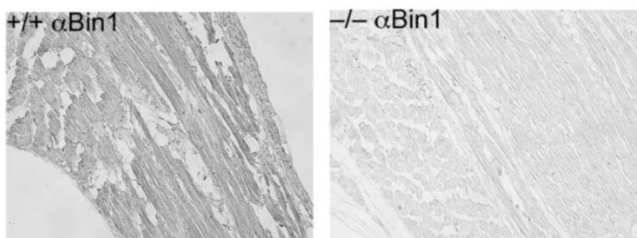
Database Link: [O00499](#)

Background: Bin1 is a conserved member of the BAR family of genes that have been implicated in diverse cellular processes including endocytosis, actin organization, programmed cell death, stress responses, and transcriptional control. The first mammalian BAR protein to be discovered, Amphiphysin I (AmphI), was identified in an immunoscreen for proteins associated with the plasma membranes of synaptic neurons, functions in the control of clathrin-dependent synaptic vesicle endocytosis. The mammalian Bin1 gene was first identified in a two hybrid screen for polypeptides that bind to the N-terminal Myc box 1 (MB1) portion of the c-Myc oncoprotein. Bin1 is similar to AmphI in overall structure, with an N-terminal BAR domain and a C-terminal SH3 domain. However, the Bin1 gene is more complex than the AmphI gene, encoding at least seven different splice variants that differ widely in subcellular localization, tissue distribution, and ascribed functions. Alternate splicing of the Bin1 gene results in ten transcript variants encoding different isoform. Bin1 is expressed ubiquitously in mammalian cells. Certain splice variants of Bin1 are expressed in the neurons, muscle cells or tumor cells. Bin1 may act with cancer suppressor and inhibits malignant cell transformation. Studies in mouse suggest that this gene plays an important role in cardiac muscle development. Bin1 has also been implicated in Alzheimer disease and cardiac disease. Defects in BIN1 are the cause of centronuclear myopathy autosomal recessive; also known as autosomal recessive myotubular myopathy.

Synonyms: mouse anti-BIN1 Antibody, AMPHL, Myc box-dependent-interacting protein 1, Amphiphysin II, Amphiphysin-like protein, Box-dependent myc-interacting protein 1, Bridging integrator 1, BIN 1, BIN-1, BIN1 antibody, anti-BIN1 antibody

Note: Anti-BIN1 antibody has been tested for use in Western Blot, ELISA, IP, and IHC. This antibody is suitable for. Specific conditions for reactivity should be optimized by the end user.

Product images:



Immunohistochemistry of Mouse Anti-BIN1 antibody. Tissue: skeletal muscle from BIN-1 wild type (+/+) and null (-/-) mouse. Fixation: formalin fixed paraffin embedded. Antigen retrieval: not required. Primary antibody: BIN-1 antibody for 1hr at RT. Secondary antibody: Peroxidase mouse secondary antibody at 1:10,000 for 45 min at RT. Localization: BIN1 is nuclear and cytoplasmic. Staining: BIN1 as precipitated brown signal.