

Product datasheet for **TA396763**

Stat5a Mouse Monoclonal Antibody [Clone ID: 5F6.F1]

Product data:

Product Type:	Primary Antibodies
Clone Name:	5F6.F1
Applications:	ELISA, IF, IHC, WB
Recommended Dilution:	WB: 1:500 - 1:2,000 IHC: 20-40 µg/ml IF: 1:50 - 1:1,000 ELISA: 1:20,000
Reactivity:	Human, Mouse
Host:	Mouse
Isotype:	IgG1, kappa
Clonality:	Monoclonal
Immunogen:	Phospho STAT5 pY694 monoclonal antibody was produced by repeated immunizations with a synthetic peptide corresponding to residues surrounding Y694 of mouse STAT5a protein.
Specificity:	Anti-STAT5 phospho Y694 Antibody was purified from concentrated tissue culture supernate by Protein A chromatography. This antibody is specific for mouse Stat5a protein phosphorylated at Y694. A BLAST analysis was used to suggest cross-reactivity with Stat5a from human, mouse and rat based on 100% homology with the immunizing sequence. Cross-reactivity with Stat5a from other sources has not been determined.
Formulation:	0.02 M Potassium Phosphate, 0.15 M Sodium Chloride, pH 7.2
Concentration:	1mg/mL - lot specific
Conjugation:	Unconjugated
Storage:	Store Anti-STAT5 phospho Y694 Antibody at -20° C prior to opening. Aliquot contents and freeze at -20° C or below for extended storage. Avoid cycles of freezing and thawing. Centrifuge product if not completely clear after standing at room temperature. Phospho STAT5 pY694 Antibody is stable for several weeks at 4° C as an undiluted liquid. Dilute only prior to immediate use.
Stability:	Expiration date is one (1) year from date of receipt.
Gene Name:	signal transducer and activator of transcription 5A



[View online »](#)

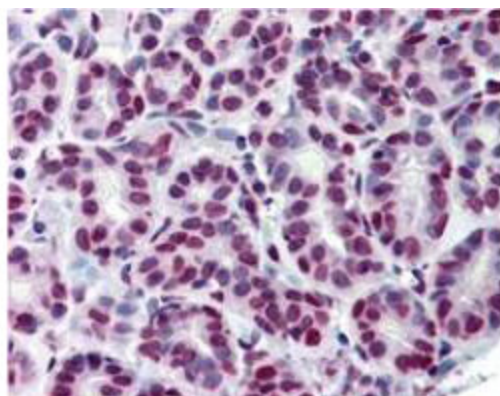
Database Link: [Entrez Gene 20850 Mouse P42230](#)

Background: Signal transducer and activator of transcription 5 (Stat5) belongs to a family of cytoplasmic transcription factors that can be activated (phosphorylated) by a cell surface receptor. Phosphorylation at Tyr694 is obligatory for Stat5 activation. Stat5 has two isoforms, Stat5 alpha and Stat5 beta. Aberrant Stat5 activation has been implicated in the pathogenesis of chronic myelogenous leukemia, prostate and breast cancer and tumor metastasis. Stat5 is localized in the cytoplasm and upon phosphorylation at Y694 is translocated to the nucleus. Ideal for Cancer, Chromatin & Nuclear Signaling and Signal Transduction research.

Synonyms: mouse anti-STAT5 pY694 Antibody, MGF antibody, Signal Transducer and Activator of Transcription 5A antibody, STAT 5 antibody

Note: This monoclonal antibody has been tested by ELISA, immunofluorescence, immunohistochemistry, and western blotting. Specific conditions for reactivity should be optimized by the end user. Expect a band approximately 91 kDa in size corresponding to phosphorylated Stat5a protein by western blotting in the appropriate cell lysate or extract. This phospho-specific monoclonal antibody reacts with mouse Stat5a phospho Y694 and shows minimal reactivity by ELISA against the non-phosphorylated form of the immunizing peptide.

Product images:



Immunohistochemistry using Anti-STAT5 pY694 monoclonal antibody shows detection of phosphorylated STAT5 pY694 in human breast tissue (40X). The antibody was used a dilution to 20 µg/mL. The image shows breast epithelium with moderate nuclear staining. Tissue was formalin fixed and paraffin embedded. No pre-treatment of sample was required. The image shows the localization of antibody as the precipitated red signal, with a hematoxylin purple nuclear counterstain. Personal communication, Andrew Elston, Lifespan Biosciences, Seattle, WA.