

Product datasheet for **TA396751S**

Mouse Monoclonal Antibody [Clone ID: 33D10.D2.G8]

Product data:

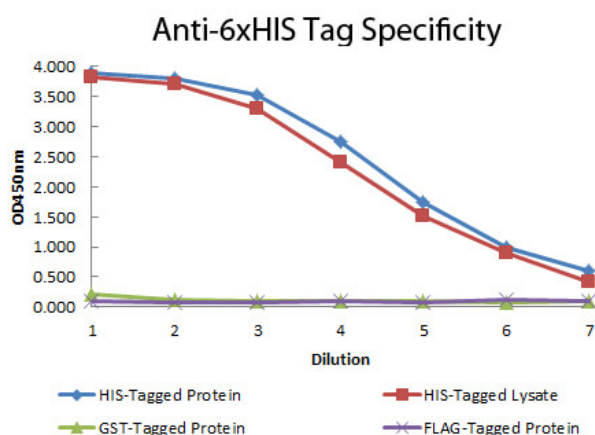
Product Type:	Primary Antibodies
Clone Name:	33D10.D2.G8
Applications:	ELISA, FC, IHC, IP, WB
Recommended Dilution:	WB: 1:2,000 - 1:10,000 IHC: User Optimized FC: User Optimized ELISA: 1:20,000 - 1:100,000
Host:	Mouse
Isotype:	IgG1, kappa
Clonality:	Monoclonal
Immunogen:	This His antibody was produced in mice by repeated immunizations with 6X His epitope tag peptide H-H-H-H-H conjugated to KLH using maleimide.
Specificity:	6X His antibody was purified from concentrated tissue culture supernate by Protein A chromatography and is directed against the 6X His motif and is useful in determining its presence in various assays. This polyclonal anti-6X His tag antibody detects over-expressed proteins containing the 6X His epitope tag. To date, this antibody has reacted with all His tagged proteins so far tested. In western blotting of bacterial extracts, the antibody does not cross-react with endogenous proteins. The antibody recognizes the His-tag (His-His-His-His-His-His) fused to either the amino- or carboxy- termini of targeted proteins in transfected or transformed cells.
Formulation:	0.02 M Potassium Phosphate, 0.15 M Sodium Chloride, pH 7.2
Concentration:	5.684 mg/mL - lot specific
Conjugation:	Unconjugated
Storage:	Store 6X His Tag Antibody at -20° C or below prior to opening. This vial contains a relatively low volume of reagent (25 µL). To minimize loss of volume dilute 1:10 by adding 225 µL of the buffer stated above directly to the vial. Recap, mix thoroughly and briefly centrifuge to collect the volume at the bottom of the vial. Use this intermediate dilution when calculating final dilutions as recommended below. Store the vial at -20°C or below after dilution. Avoid cycles of freezing and thawing.



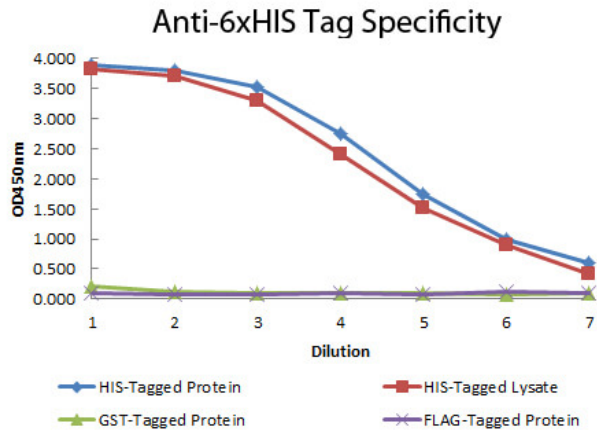
[View online »](#)

- Stability:** Expiration date is three (3) months from date of receipt.
- Background:** 6X His antibody is an Epitope tag which is a short peptide sequence that is easily recognized by tag-specific antibodies. Due to their small size, epitope tags do not affect the tagged protein's biochemical properties. Most often sequences encoding the epitope tag are included with target DNA at the time of cloning to produce fusion proteins containing the epitope tag sequence. This allows anti-epitope tag antibodies to serve as universal detection reagents for any tag containing protein produced by recombinant means. This means that anti-epitope tag antibodies are a useful alternative to generating specific antibodies to identify, immunoprecipitate or immunoaffinity purify a recombinant protein. The anti-epitope tag antibody is usually functional in a variety of antibody-dependent experimental procedures. Expression vectors producing epitope tag fusion proteins are available for a variety of host expression systems including bacteria, yeast, insect and mammalian cells.
- Synonyms:** mouse anti-6X His Tag Antibody, anti-HIS, HIS Antibody, 6X His Tag Antibody, HHHHHH epitope tag antibody
- Note:** Anti-6X His is optimally suited for monitoring expression of His-tagged fusion proteins. As such, Anti-6X His/6XHIS can be used to identify fusion proteins that contain the 6X His epitope. The antibody recognizes the His tag fused either to the amino- or carboxy- termini of targeted proteins. This antibody has been tested by ELISA and western blotting against both the immunizing peptide and His-containing recombinant proteins. Although not tested, this antibody is likely functional for immunoprecipitation and immunocytochemistry.

Product images:



ELISA of Mouse anti-6xHIS Tag Antibody. Antigen: HIS-tagged purified protein and E. coli cell lysates expressing HIS-Tagged construct, GST- and RON-tagged purified proteins. Coating amount: 0.15ug per well. Primary antibody: 6xHIS Tag antibody at 100ug/mL. Dilution series: 2-fold. Mid-point concentration: 200ng/mL. Secondary antibody: Peroxidase mouse secondary antibody at 1:10,000. Substrate: TMB (p/n TMBE-1000).



ELISA of Mouse anti-6xHIS Tag Antibody. Antigen: HIS-tagged purified protein and E. coli cell lysates expressing HIS-Tagged construct, GST- and RON-tagged purified proteins. Coating amount: 0.15ug per well. Primary antibody: 6xHIS Tag antibody at 100ug/mL. Dilution series: 2-fold. Mid-point concentration: 200ng/mL. Secondary antibody: Peroxidase mouse secondary antibody at 1:10,000. Substrate: TMB (p/n TMBE-1000).