

Product datasheet for **TA396747S**

Mouse Monoclonal Antibody [Clone ID: 4C7.D5]

Product data:

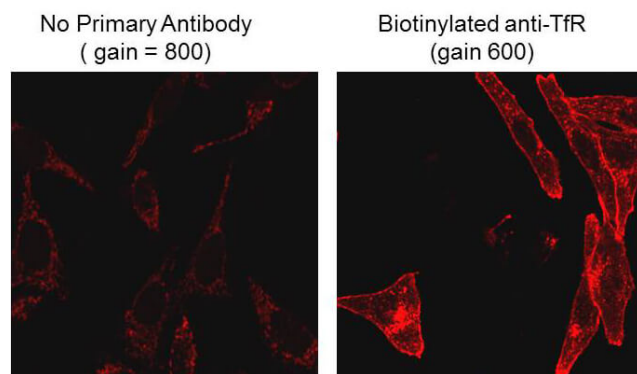
Product Type:	Primary Antibodies
Clone Name:	4C7.D5
Applications:	ELISA, FC, IF, IHC, WB
Recommended Dilution:	WB: 1:2,000 - 1:10,000 IHC: 1:1,000 - 1:5,000 IF: 2 µg/mL FC: 1-2 µg/mL ELISA: 1:20,000
Host:	Mouse
Isotype:	IgG2a, lambda
Clonality:	Monoclonal
Immunogen:	Biotin conjugated to Keyhole Limpet Hemocyanin (b-KLH)
Specificity:	Biotin Antibody was prepared from mouse ascites by immunoaffinity chromatography using Biotin coupled to sepharose beads. Assay by immunoelectrophoresis resulted in a single precipitin arc against anti-mouse serum, Biotin conjugated IgG and Biotin conjugated Bovine Serum Albumin.
Formulation:	0.02 M Potassium Phosphate, 0.15 M Sodium Chloride, pH 7.2
Concentration:	0.9mg/mL - lot specific
Conjugation:	Unconjugated
Storage:	Store Biotin antibody at -20° C or below prior to opening. This vial contains a relatively low volume of reagent (25 µL). To minimize loss of volume dilute 1:10 by adding 225 µL of the buffer stated above directly to the vial. Recap, mix thoroughly and briefly centrifuge to collect the volume at the bottom of the vial. Use this intermediate dilution when calculating final dilutions as recommended below. Store the vial at -20°C or below after dilution. Avoid cycles of freezing and thawing.
Stability:	Expiration date is one (1) year from date of receipt.
Background:	Localization of biotinylated probes with avidin produces may produce high background levels. Anti-biotin antibodies may be substituted for avidin to decrease non-specific binding.
Synonyms:	mouse anti-Biotin Monoclonal Antibody, Anti-Biotin, Vitamin B4 antibody



[View online »](#)

Note: Anti-Biotin antibody has been tested in ELISA, western blot and immunofluorescence and is suitable for lateral flow, immunoprecipitation, immunodiffusion, conjugation and most immunological methods requiring lot-to-lot consistency, high titer and specificity.

Product images:



Immunofluorescence Microscopy of Mouse Anti-Biotin antibody. Tissue: HeLa cells. Fixation: 0.5% PFA. Antigen retrieval: not required. Primary antibody: Biotinylated anti-transferrin receptor antibody. Secondary antibody: CF™488A anti-biotin secondary antibody at 2ug/mL for 45 min at RT. Localization/Staining: plasma membrane and endosome.