

Product datasheet for **TA396745S**

Mouse Monoclonal Antibody [Clone ID: 8B9.C6.D3]

Product data:

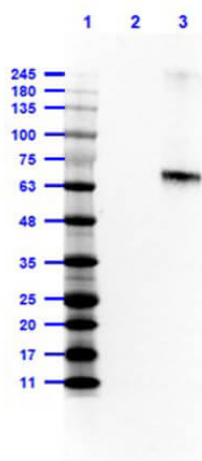
| | |
|-----------------------|--|
| Product Type: | Primary Antibodies |
| Clone Name: | 8B9.C6.D3 |
| Applications: | ELISA, FC, IHC, WB |
| Recommended Dilution: | WB: 1:500 - 1:3,000 IHC: 1:250 - 1:1,500 FC: 1-2 µg/mL ELISA: 1:5,000 - 1:30,000 |
| Host: | Mouse |
| Isotype: | IgG2a, kappa |
| Clonality: | Monoclonal |
| Immunogen: | Fluorescein conjugated to Mouse IgG |
| Specificity: | Fluorescein Antibody was prepared from mouse ascites by Protein A/G chromatography. Assay by immunoelectrophoresis resulted in a single precipitin arc against anti-mouse serum, Fluorescein conjugated IgG and Fluorescein conjugated Bovine Serum Albumin. |
| Formulation: | 0.02 M Potassium Phosphate, 0.15 M Sodium Chloride, pH 7.2 |
| Concentration: | 0.51mg/mL - lot specific |
| Conjugation: | Unconjugated |
| Storage: | Store vial at -20° C or below prior to opening. This vial contains a relatively low volume of reagent (25 µL). To minimize loss of volume dilute 1:10 by adding 225 µL of the buffer stated above directly to the vial. Recap, mix thoroughly and briefly centrifuge to collect the volume at the bottom of the vial. Use this intermediate dilution when calculating final dilutions as recommended below. Store the vial at -20°C or below after dilution. Avoid cycles of freezing and thawing. |
| Stability: | Expiration date is one (1) year from date of receipt. |
| Background: | Anti-Fluorescein can be used as visualization reagent for fluorescein-labelled compounds (such as antibodies, lectins and peptide nucleic acid (PNA) probes). Anti-FITC is designed for immunofluorescence microscopy, fluorescence based plate assays (FLISA) and fluorescent western blotting. |
| Synonyms: | mouse Anti-FITC antibody, mouse anti-fluorescein antibody |



[View online »](#)

Note: Anti-Fluorescein Antibody has been tested by ELISA, western blot, and immunofluorescence. This product is suitable for immunomicroscopy, in situ hybridization and flow cytometry or FACS analysis as well as other antibody based fluorescent assays requiring lot-to-lot consistency.

Product images:



Western Blot of Mouse Anti-Fluorescein Antibody. Lane 1: Opal Prestained Molecular Weight Marker (p/n MB-210-0500). Lane 2: Bovine Albumin (BSA) (p/n 001-0133) [0.01 μ g]. Lane 3: Bovine Albumin-Fluorescein (BSA-FITC) (p/n 001-0233) [0.01 μ g]. Primary Antibody: Ms-anti-Fluorescein 1.0 μ g/mL overnight at 2-8 $^{\circ}$ C. Secondary Antibody: Rabbit Anti-Mouse HRP (p/n 610-403-C46) at 1:40,000 for 30mins at RT. Block: 5% BLOTTO in 1X PBS for 1hr at RT. Predicted MW: ~60kDa. Observed MW: ~65kDa. Exposure: 0.5sec.