

## Product datasheet for **TA396744**

### Mouse Monoclonal Antibody [Clone ID: 8B9.C6.D3]

#### Product data:

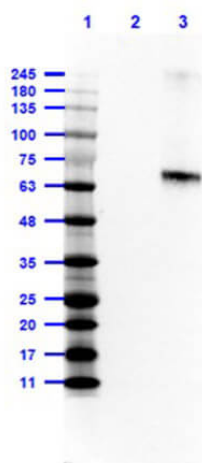
Product Type:	Primary Antibodies
Clone Name:	8B9.C6.D3
Applications:	ELISA, FC, IHC, WB
Recommended Dilution:	<b>WB:</b> 1:500 - 1:3,000 <b>IHC:</b> 1:250 - 1:1,500 <b>FC:</b> 1-2 µg/mL <b>ELISA:</b> 1:5,000 - 1:30,000
Host:	Mouse
Isotype:	IgG2a, kappa
Clonality:	Monoclonal
Immunogen:	Fluorescein conjugated to Mouse IgG
Specificity:	Fluorescein Antibody was prepared from mouse ascites by Protein A chromatography. Assay by immunoelectrophoresis resulted in a single precipitin arc against anti-mouse serum, Fluorescein conjugated IgG and Fluorescein conjugated Bovine Serum Albumin.
Formulation:	0.02 M Potassium Phosphate, 0.15 M Sodium Chloride, pH 7.2
Concentration:	1.0 mg/ml - lot specific
Conjugation:	Unconjugated
Storage:	Store vial at -20° C prior to opening. Aliquot contents and freeze at -20° C or below for extended storage. Avoid cycles of freezing and thawing. Centrifuge product if not completely clear after standing at room temperature. This product is stable for several weeks at 4° C as an undiluted liquid. Dilute only prior to immediate use.
Stability:	Expiration date is one (1) year from date of receipt.
Background:	Anti-Fluorescein is designed for immunofluorescence microscopy, in situ hybridization, fluorescence based plate assays (FLISA) and fluorescent western blotting. This product is also suitable for multiplex analysis, including multicolor imaging, utilizing various commercial platforms.
Synonyms:	mouse Anti-FITC antibody, mouse anti-fluorescein antibody



[View online »](#)

**Note:** Anti-Fluorescein Antibody has been tested by ELISA, western blot, and immunofluorescence. This product is suitable for immunomicroscopy, in situ hybridization and flow cytometry or FACS analysis as well as other antibody based fluorescent assays requiring lot-to-lot consistency.

### Product images:



Western Blot of Mouse Anti-Fluorescein Antibody. Lane 1: Opal Prestained Molecular Weight Marker (p/n MB-210-0500). Lane 2: Bovine Albumin (BSA) (p/n 001-0133) [0.01 $\mu$ g]. Lane 3: Bovine Albumin-Fluorescein (BSA-FITC) (p/n 001-0233) [0.01 $\mu$ g]. Primary Antibody: Ms-anti-Fluorescein 1.0 $\mu$ g/mL overnight at 2-8 $^{\circ}$ C. Secondary Antibody: Rabbit Anti-Mouse HRP (p/n 610-403-C46) at 1:40,000 for 30mins at RT. Block: 5% BLOTTO in 1X PBS for 1hr at RT. Predicted MW: ~60kDa. Observed MW: ~65kDa. Exposure: 0.5sec.