

Product datasheet for **TA396738S**

PPI Goat Polyclonal Antibody

Product data:

Product Type:	Primary Antibodies
Applications:	ELISA, IP, WB
Recommended Dilution:	WB: 1:500 - 1:2,000 ELISA: 1:1,000 - 1:10,000
Reactivity:	Carica papaya
Host:	Goat
Clonality:	Polyclonal
Immunogen:	Papain [Carica papaya]
Specificity:	Anti-Papain antibody is an IgG fraction antibody purified from monospecific antiserum by a multi-step process which includes delipidation, salt fractionation and ion exchange chromatography followed by extensive dialysis against the buffer stated above. Assay by immunoelectrophoresis resulted in a single precipitin arc against anti-Biotin, anti-Goat Serum as well as purified and partially purified Papain [Carica papaya]. Cross reactivity against Papain from other sources may occur but have not been specifically determined.
Formulation:	0.02 M Potassium Phosphate, 0.15 M Sodium Chloride, pH 7.2
Concentration:	1.0 mg/mL - lot specific
Conjugation:	Biotin
Storage:	Store vial at -20° C or below prior to opening. This vial contains a relatively low volume of reagent (25 µL). To minimize loss of volume dilute 1:10 by adding 225 µL of the buffer stated above directly to the vial. Recap, mix thoroughly and briefly centrifuge to collect the volume at the bottom of the vial. Use this intermediate dilution when calculating final dilutions as recommended below. Store the vial at -20°C or below after dilution. Avoid cycles of freezing and thawing.
Stability:	Expiration date is one (1) year from date of receipt.
Database Link:	<u>P00784</u>



[View online »](#)

Background:

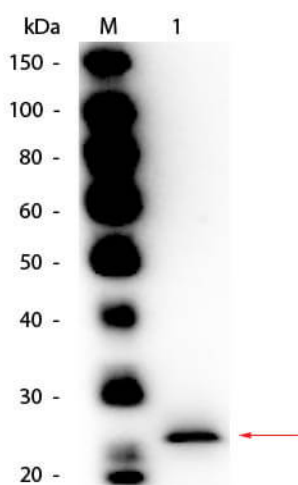
Anti-Papain antibody recognizes the cysteine protease papain commonly found in papaya (*Carica papaya*). Papain hydrolyzes a broad range of peptides with preference for bulky hydrophobic amino acids at the P2 position. Papain is a single-chained polypeptide stabilized by three disulfide bridges. Its active site contains a catalytic dyad composed of cysteine-25 and histidine-159. Anti-Papain antibody is ideal for researchers interested in Cell Biology and Proteolysis.

Synonyms:

goat anti-Papain Antibody biotin Conjugation, biotin Conjugated goat anti-Papain Antibody, Allergen Car p 1 antibody, Papaya proteinase I antibody, PPI antibody

Note:

Anti-Papain Biotin antibody has been tested by ELISA and western blot. Expect band at 38.9 kDa in appropriate cell lysate or extract. Specific conditions for reactivity should be optimized by the end user.

Product images:


Western Blot of Goat anti-Papain Antibody Biotin Conjugated. Lane 1: Papain. Load: 50 ng per lane. Primary antibody: Goat anti-Papain Antibody Biotin Conjugated at 1:1,000 overnight at 4°C. Secondary antibody: HRP Streptavidin (p/n S000-03) secondary antibody at 1:40,000 for 30 minutes at RT. Block: MB-070 for 30 minutes at RT. Predicted/Observed size: 23 kDa, 23 kDa for Papain.