

## Product datasheet for **TA396737S**

### LDHA Goat Polyclonal Antibody

#### Product data:

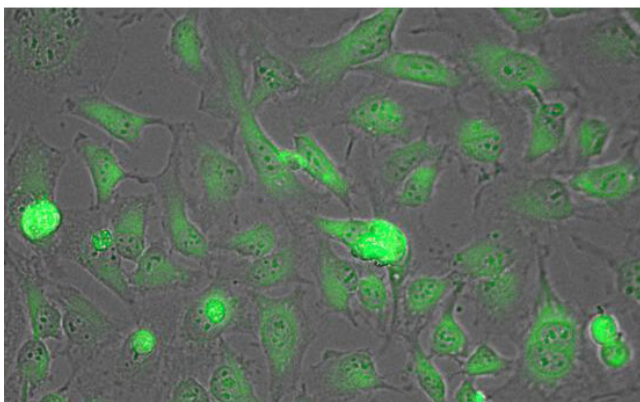
Product Type:	Primary Antibodies
Applications:	ELISA, IP, WB
Recommended Dilution:	<b>WB:</b> 1:500 - 1:2,500 <b>ELISA:</b> 1:2,500- 1:6,500
Reactivity:	Rabbit
Host:	Goat
Clonality:	Polyclonal
Immunogen:	Lactate Dehydrogenase [full length protein isolated from rabbit muscle]
Specificity:	Anti-lactate dehydrogenase antibody is an IgG fraction antibody purified from monospecific antiserum by a multi-step process which includes delipidation, salt fractionation and ion exchange chromatography followed by extensive dialysis against the buffer stated above. Assay by immunoelectrophoresis resulted in a single precipitin arc against anti-Biotin, anti-Goat Serum as well as purified and partially purified Lactate Dehydrogenase [Rabbit Muscle]. Cross reactivity against Lactate Dehydrogenase from other sources may occur but have not been specifically determined.
Formulation:	0.02 M Potassium Phosphate, 0.15 M Sodium Chloride, pH 7.2
Concentration:	1.0 mg/mL - lot specific
Conjugation:	Biotin
Storage:	Store vial at -20° C or below prior to opening. This vial contains a relatively low volume of reagent (25 µL). To minimize loss of volume dilute 1:10 by adding 225 µL of the buffer stated above directly to the vial. Recap, mix thoroughly and briefly centrifuge to collect the volume at the bottom of the vial. Use this intermediate dilution when calculating final dilutions as recommended below. Store the vial at -20°C or below after dilution. Avoid cycles of freezing and thawing.
Stability:	Expiration date is one (1) year from date of receipt.
Database Link:	<a href="#">Entrez Gene 100009107 Rabbit P13491</a>



[View online »](#)

- Background:** Anti-lactate dehydrogenase recognizes lactate dehydrogenase which catalyzes the interconversion of pyruvate to lactate and NADH to NAD<sup>+</sup>. This reaction occurs in the absence or lack of oxygen, making lactate dehydrogenase critical for anaerobic respiration. There five known isozymes of LDH, each localized in different types of tissue. In medicine, LDH is often used as a marker of various diseases ranging from hemolysis to encephalitis. Anti-lactate dehydrogenase antibody is ideal for investigators interested in Metabolism, Cancer, and Signal Transduction.
- Synonyms:** goat anti-Lactate Dehydrogenase Antibody biotin Conjugation, biotin Conjugated goat anti-Lactate Dehydrogenase Antibody, L-lactate dehydrogenase A chain, LDH-A, LDH muscle subunit, LDH-M
- Note:** Anti-Lactate Dehydrogenase Biotin antibody has been tested by ELISA, Western blot, and immunofluorescence. This antibody is assayed against 1.0 µg of Lactate Dehydrogenase in a standard capture ELISA using Peroxidase Conjugated Streptavidin #S000-03 and ABTS (2,2'-azino-bis-[3-ethylbenthiazoline-6-sulfonic acid]) code # ABTS-100 as a substrate for 30 minutes at room temperature. A working dilution of 1:4,000 to 1:20,000 of the reconstitution concentration is suggested for this product.

### Product images:



Immunofluorescence Microscopy of Biotin conjugated Anti-Lactate Dehydrogenase Antibody. Tissue: HeLa cells. Fixation: fixed for 5 min in 1:1 MeTOH:Acetone, blocked with MB-071 (preservative free) for 15 min. Antigen retrieval: not required. Primary antibody: Lactate Dehydrogenase antibody at 1:200 for 1 h at RT. Secondary antibody: DyLight 488 conjugated Streptavidin antibody at 1:10,000 for 30 min at RT. Staining: Lactate Dehydrogenase as green fluorescent signal.